



## General

|                  |                     |
|------------------|---------------------|
| Basic functions  | : Floating Sheerleg |
| Classification   | : Lloyds 100A4      |
| Port of Registry | : Groningen         |
| Call Sign        | : PIAX              |
| IMO number       | : 7607443           |
| Europe number    | : 2204813           |

## Dimensions

|                              |           |
|------------------------------|-----------|
| Length                       | : 36,15 m |
| Beam (normal operations)     | : 18,20 m |
| (with side pontoons)         | : 24,00 m |
| Draught min.                 | : 1,85 m  |
| Draught max.                 | : 3,00 m  |
| Sailing height min. (Canal)  | : 5,00 m  |
| Sailing height min. (normal) | : 11,00 m |
| Lifting height               | : 53 m    |
| Gross tonnage                | : 1124 RT |
| Nett tonnage                 | : 428 RT  |

## Accommodation

8 persons

## Propulsion

2 x 225 kW

## Tackles

|              |             |
|--------------|-------------|
| Main tackles | : 2 x 150 T |
| Jib tackles  | : 2 x 75 T  |
| Main runner  | : 20 T      |
| Jib runner   | : 10 T      |
| A-frame      | : 35 m      |
| Jib          | : 20 m      |

## Anchor winches

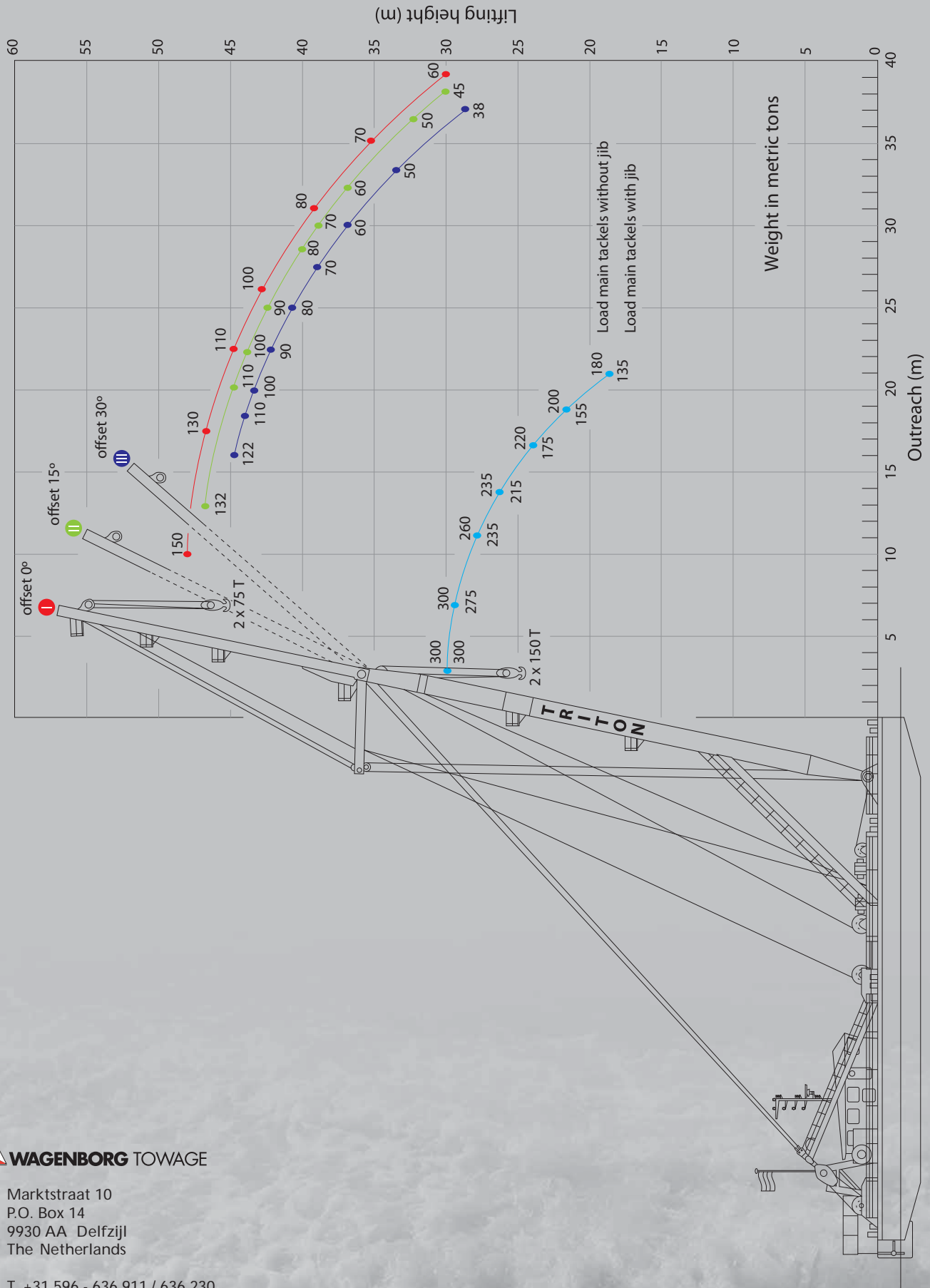
|         |                                    |
|---------|------------------------------------|
| Forward | : 2 x 5 T Cap. 250 m. of wire rope |
| Aft     | : 2 x 5 T Cap. 250 m. of wire rope |

Particulars believed to be correct, but not guaranteed.



## WAGENBORG TOWAGE

# TRITON



Marktstraat 10  
 P.O. Box 14  
 9930 AA Delfzijl  
 The Netherlands

T. +31 596 - 636 911 / 636 230  
 F. +31 596 - 636 250

E. [towage@wagenborg.com](mailto:towage@wagenborg.com)  
[www.wagenborg.com](http://www.wagenborg.com)