

# WATERPOORT



## General

Basic functions	: Towing and mooring operations
Classification	: Bureau Veritas Coastal Waters I 3/3 E
National authorities	: Dutch Shipping Inspection 30 n.m.
Europe number	: 2203865

## Dimensions

Length o.a.	: 20.40 m.
Beam o.a.	: 6.30 m.
Draught aft.	: 2.80 m.
Displacement	: 138.7 ton(m.)

## Tank capacities

Fuel oil	: 9000 l.
Fresh water	: 5000 l.
Dirty lub. oil	: 1500 l.
Clean lub. oil	: 200 l.

## Accommodation

Heated living spaces for 3 persons, consisting of 3 cabins, galley/mess and sanitary

## Performances

Bollard pull	: 15 ton(m.)
Speed	: 11 knots

## Propulsion system

Main engine	: Stork type 6 FHD 240
Total power	: 925 kW
Gearbox	: Brevo
Propeller	: 1 x van Vooren
Diameter	: 1700 mm

## Auxiliary equipment

Generator set	: Cummins type 6B5.9M
Capacity	: 62 kW

## Deck lay-out

Anchors	: 1
Chains	: 1 x 165 m. 1269 kg.
Anchor winch	: Rekab
Towing hook	: Mampaey disc type SWL 15 tons
Tuggerwinch	: 14 tons

## Ballast / Salvage

submersible pumps	: 2
Koppelwinch	: 2

## Nautical and communication equipment

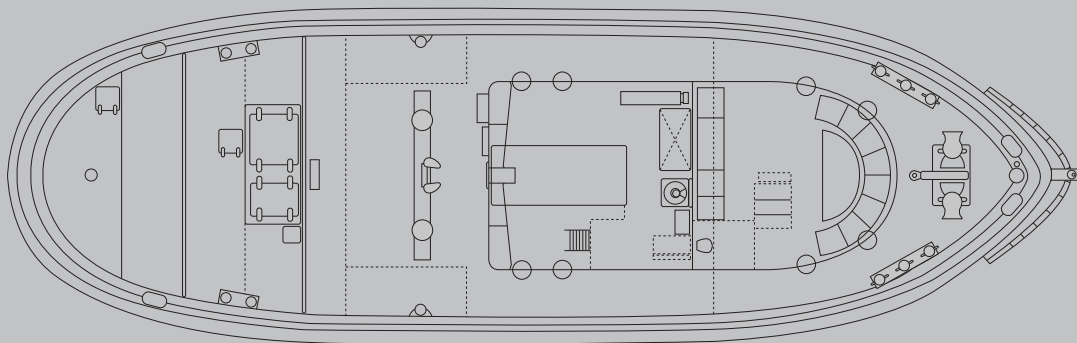
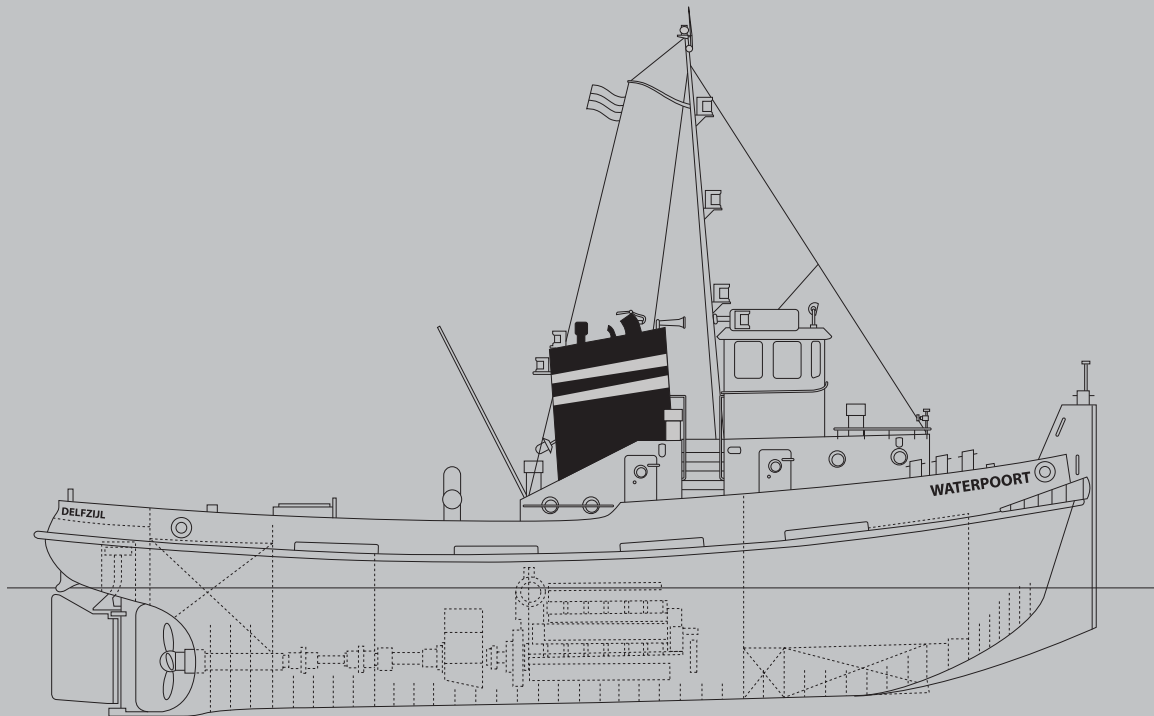
Searchlight	: 1500 W
Radar system	: Furuno - FR 1011 - N
Compass	: Observator - Pilot - No. 11980
Autopilot	: Sperry - Autopilot - 8T
GPS	: AP Navigator Philips
Echosounder	: Radio Holland - EL 4242
VHF radio telephone	: 2 x Rs 8000 NL 2
Navtex receiver	: Radio Holland - Navtex 2
VHF hand-held receiver	: 2 x Two-way Icom Ic-M12H

Particulars believed to be correct, but not guaranteed.



## WAGENBORG TOWAGE

# WATERPOORT



Marktstraat 10  
P.O. Box 14  
9930 AA Delfzijl  
The Netherlands

T. +31 596 - 636 911 / 636 230  
F. +31 596 - 636 250

E. [towage@wagenborg.com](mailto:towage@wagenborg.com)  
[www.wagenborg.com](http://www.wagenborg.com)

