



General

Basic functions	: Fire fighting, towing and mooring operations
Classification	: Bureau Veritas Coastal Water I 3/3 E
National Authorities	: Dutch Shipping Inspection 5 n.m.
Call sign	: PHCT
Imo nr.	: 8985969

Dimensions

Length	: 18,30 m.
Beam	: 7,00 m.
Depth	: 2,91 m.
Draught	: 3,00 m.
Displacement	: 117 ton (m).

Tank capacities

Fuel oil	: 28000 l.
Fresh water	: 17000 l.
Ballast	: 3500 l.
Dirty lub oil	: 450 l.
Sewage	: 450 l.

Accommodation

Performances

Bollard pull	: 30 ton
Speed	: 13 kn

Propulsion system

Main engine	: 2 x Caterpillar 1100 bhp 3508 B Pita
Total power	: 1618 Kw
Gearbox	: 2 x reijntjes WAF 562 5.1:1
Propeller	: 2 x Lips
Diameter	: 2 x 1700 mm in Nozzles

Auxiliary equipment

Generator set	: 1 x Caterpillar 3054
Capacity	: 43 Kva + 75 Kva

Deck lay-out

Anchors	: 1 x Hall 150 kg
Chains	: 14 mm 165 mtr Q2
Towing hook	: Data Hydraulic 30 tons SWL Pneumatic
Towing winch	: Brusselle side by side Holding Hoopkracht 60 ton, 10 ton pull

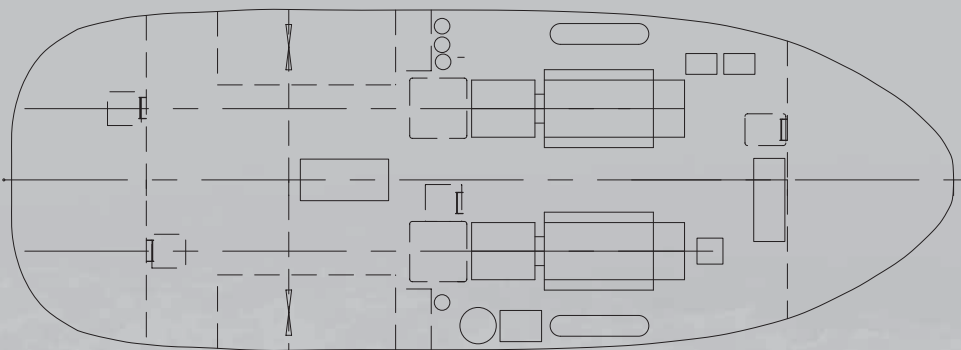
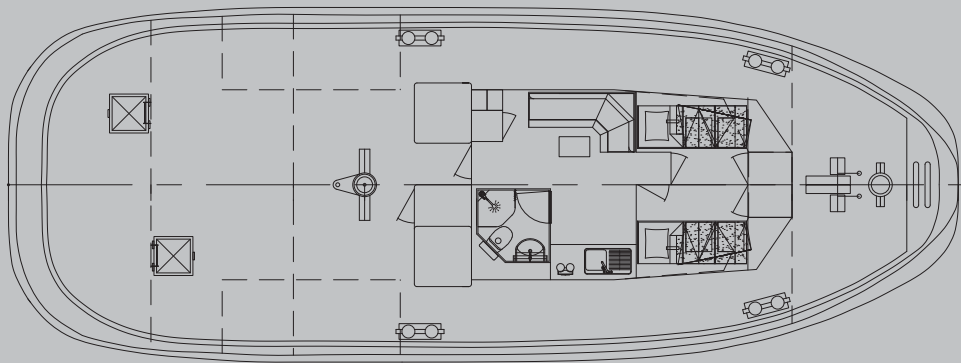
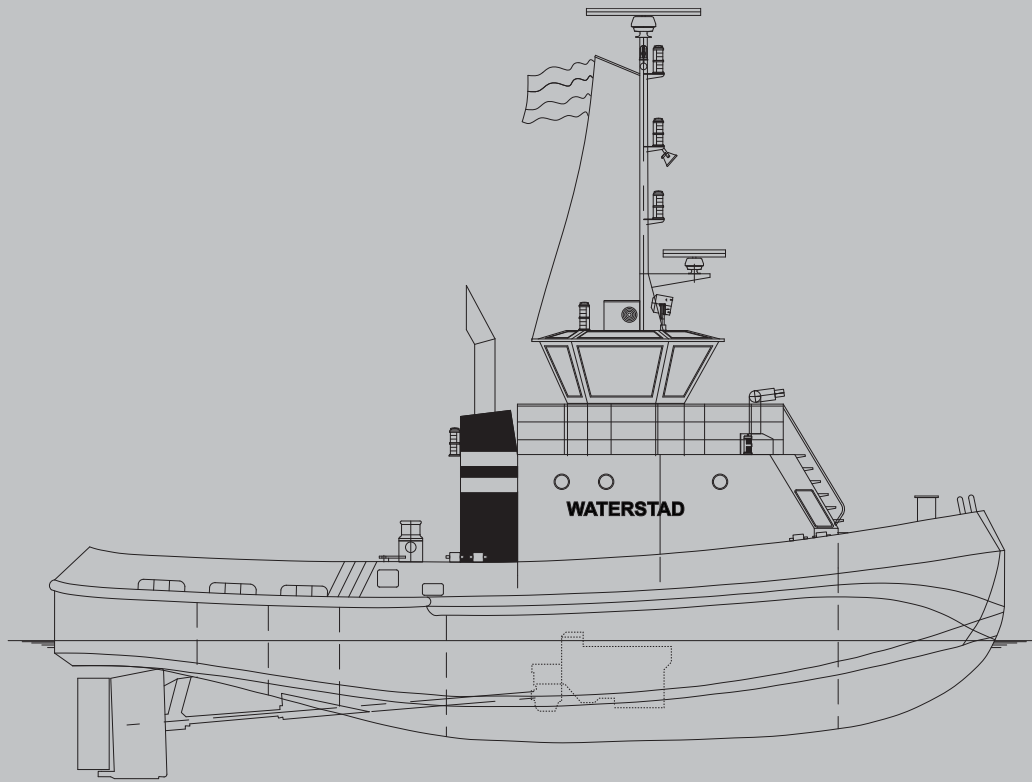
Nautical and communication equipment

Searchlight	: 1000 W
Radar	: Furuno Far 2117
Compass	: Marine Electromagnetisch Vario120
GPS	: IRG Radar 1800
Echosounder	: IRC Plot 500F
VHF	: 2 x Marine transceiver 1 c-N 601
Hand VHF	: 2 x Marine transceiver Hx2 601
Fi-Fi	: Monitor Foamtank 3500 ltr

Particulars believed to be correct, but not guaranteed.



WATERSTAD



Marktstraat 10
P.O. Box 14
9930 AA Delfzijl
The Netherlands

T. +31 596 - 636 911 / 636 230
F. +31 596 - 636 250

E. towage@wagenborg.com
www.wagenborg.com

