



ROYAL  
**WAGENBORG**



**VERDI**

## Wagenborg Offshore

As an international offshore specialist and with many years of experience in the global oil and gas transport business, Wagenborg Offshore has committed professionals at its heart, carrying out complex logistic projects worldwide.

Wagenborg Offshore is a specialist in shallow water transport and has been operating in the Caspian Sea for decades with its dedicated vessels. The company also has vast experience and knowledge of ice navigation in Baltic and Scandinavian waters.

Wagenborg Offshore has state-of-the-art equipment and technologies that comply with the highest quality industry standards.

### GENERAL

Call sign	UNAH
Yard	De Hoop, Lobith
Year	2009
Classification	BV,    HULL . MACH Special service/ Accommodation Barge-no propulsion/ Sheltered area SHELTERED AREA (OFFSHORE SHELTERED ENCLOSURES- CASPIAN SHELF, Hs MAX 0.5mts )
Flag	Republic of Kazakhstan

### DIMENSIONS

Length overall:	116.5 m
Length B.P(W/L):	116.15 m
Breadth over all:	11.45 m
Breadth (moulded):	11.40 m
Depth (moulded):	4.25 m
Deadweight:	1866 t
Draught:	2.50 m
Height main deck:	4.28 m
Gross Tonnage:	3593 NT
Nett Tonnage:	1441 NT
Light ship:	1993 MT

### CAPACITIES

Fuel oil bunkers:	119.4 m <sup>3</sup>
Fresh water tank:	305.7 m <sup>3</sup>
Sewage tanks:	914.9 m <sup>3</sup>
Dirty water tank:	59.2 m <sup>3</sup>
Water ballast tank:	260 m <sup>3</sup>
Watermakers	5 x 12,5 tons/day at 5degrees

### ACCOMMODATION

Complement	286 persons
Cabins	79 cabins
Other facilities	Two laundries, internet room for six persons, cold/dry store, freezer, messroom, reception, offices, fitness, laundry, 3 changing rooms, incinerator, hospital, bar, pub, kitchen

### HEAT/COLD SYSTEM

HVAC system inside the accomodation is designed for:	
Summer:	outside +40C° / 70% RH inside +27C° / 50% RH
Winter:	outside -36C° inside +18C°

### MACHINERY / PERFORMANCE

Main Diesel Generators	3 x Engines, Scania CV AB , Model D11655M, Test D2, Rated Power (kW) and Speed (rpm) 426/1500 each
------------------------	--

### DELIVERY RATES

Fuel oil:	4.0bar/ 4" TODO only receive
Sewage:	50m3/hr @ 3.0 bar/ 4" TODO
Freshwater:	20m3/hr @3.0 bar/ 3" TODO
Fire pump:	30m3/hr

### DECK EQUIPMENT

Aft Deck	Capstan aft deck with anchor
Deck crane	10 ton @ 10m,
Fore Deck	Windless fore deck with anchors

### SAFETY EQUIPMENT

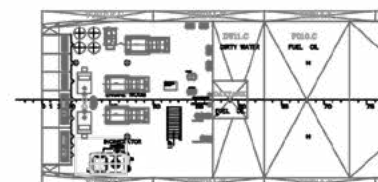
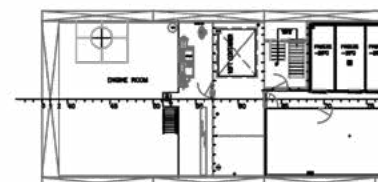
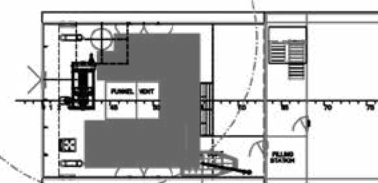
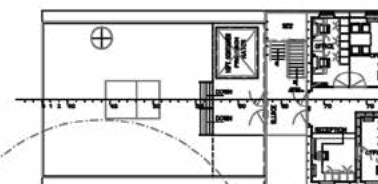
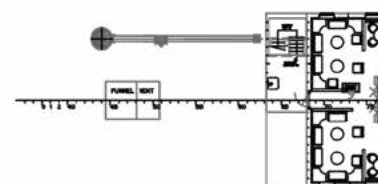
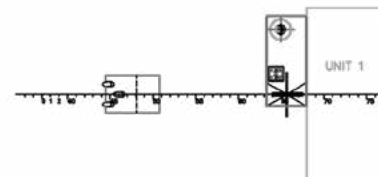
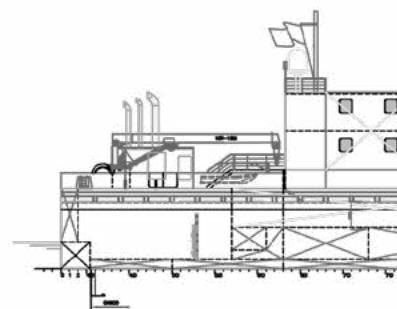
4 x Life rings
320 Life jackets

### ELECTRONICS

1x AIS
3x Portable radio GMDSS
2x Mobil radio VHF
1x EPRIB
5x POrtable radio VHF
1x Inmarsat C

### ENVIRONMENTAL

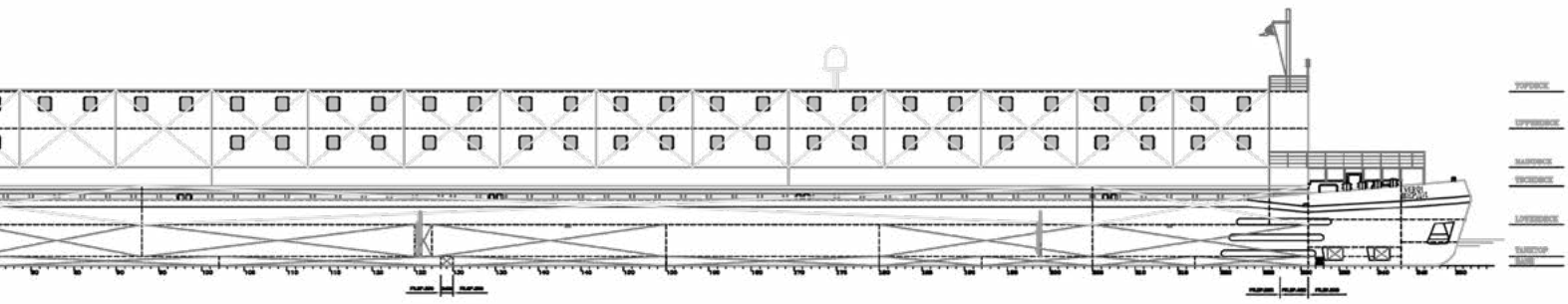
H2S Gas detection on board
----------------------------



## WAGENBORG OFFSHORE

P.O. Box 14, 9930 AA Delfzijl  
Marktstraat 10, 9934 CK Delfzijl  
The Netherlands  
T +31 (0)596 636 911  
F +31 (0)596 636 250

E [businessdevelopment@wagenborg.com](mailto:businessdevelopment@wagenborg.com)



TOPDECK  
UPPERDECK  
MAINDECK  
TECDECK  
LOWERDECK  
TANKTOP

