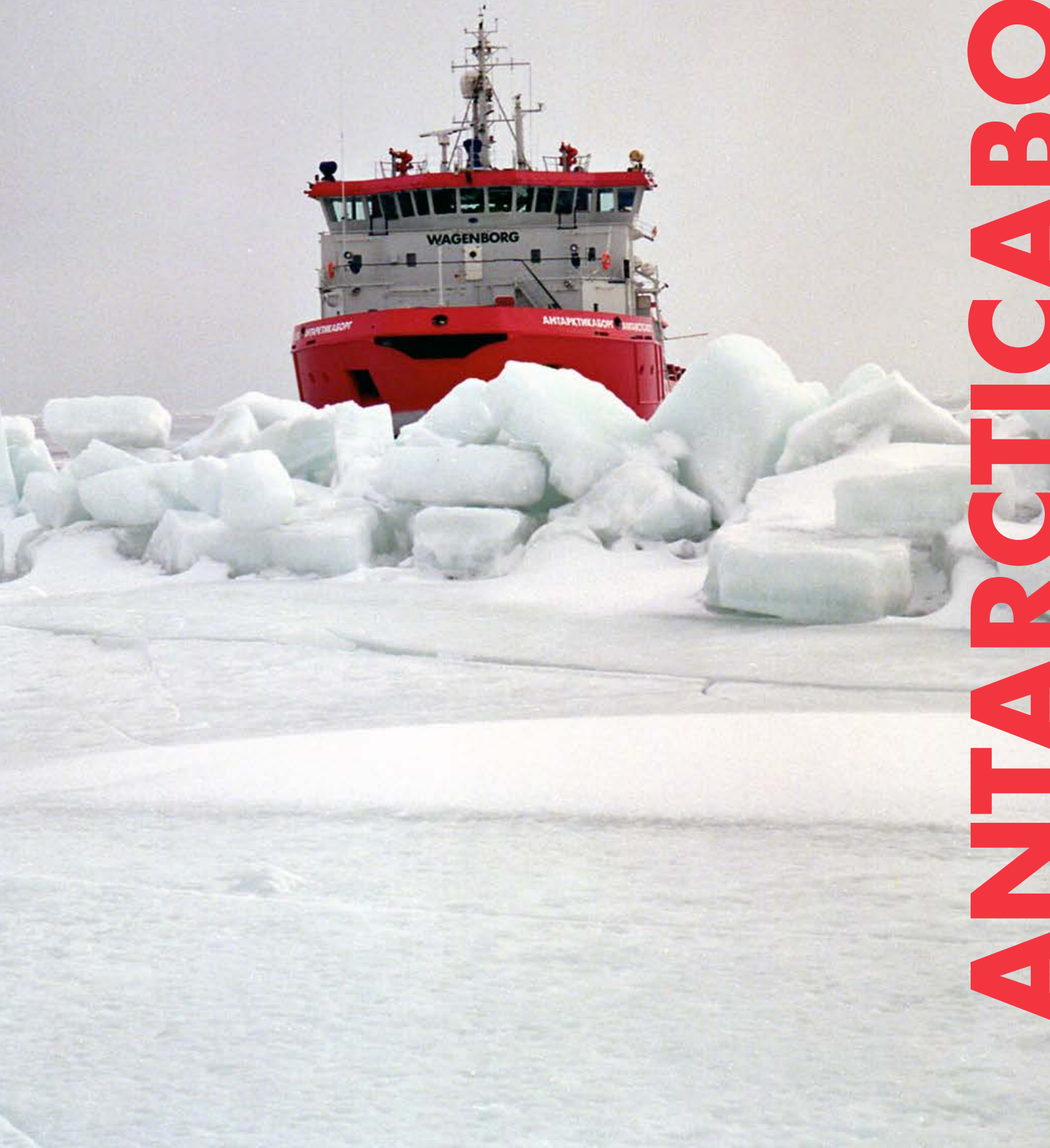




ROYAL  
**WAGENBORG**



**ANTARCTICABORG**

## Wagenborg Offshore

As an international offshore specialist and with many years of experience in the global oil and gas transport business, Wagenborg Offshore has committed professionals at its heart, carrying out complex logistic projects worldwide.

Wagenborg Offshore is a specialist in shallow water transport and has been operating in the Caspian Sea for decades with its dedicated vessels. The company also has vast experience and knowledge of ice navigation in Baltic and Scandinavian waters.

Wagenborg Offshore has state-of-the-art equipment and technologies that comply with the highest quality industry standards.

### GENERAL

Port of registry	Aktay, Kazakhstan
Flag	Republic of Kazakhstan
Yard	Kvaerner Masa Yards Inc., Finland
Classification	Bureau Veritas: (CP) I 3/3 E Supply Vessel Fire Fighting 1 deep sea, MACH, Aut-MS, Finnish-Swedish: Ice Class 1 A Super Re-classed Russian Maritime Register of Shipping: KM * ULA1

### DIMENSIONS

Length over all:	65.10 m
Length dwt:	57.68 m
Breadth over all:	16.60 m
Breadth moulded:	16.40 m
Depth:	4.40 m
Draught Max (summer):	2.90 m
Gross Tonnage:	1,453 tons
Deadweight:	650 tons
Displacement max draught:	2,093 tons
Service speed:	13 knots
Service speed in 60cm ice:	3 knots

### CAPACITIES

Fuel cargo tanks:	363 m <sup>3</sup>
Liquid mud tanks:	48 m <sup>3</sup>
Fresh water:	278 m <sup>3</sup>
Bulk (cement/barite):	51 m <sup>3</sup>
Deck cargo space:	350 m <sup>3</sup>
Cargo sewage:	67 m <sup>3</sup>

### ACCOMODATION

Complement:	20 persons 12 crew
-------------	-----------------------

### PROPULSION

Main Generators:	2 x Wärtsilä NSD Diesel Engine
Engine:	Type 6 L26 1950 kW
Propulsor:	2 x Azipod propulsion 1500 kW
Bow thruster:	150 kW

### TOWING CAPACITY

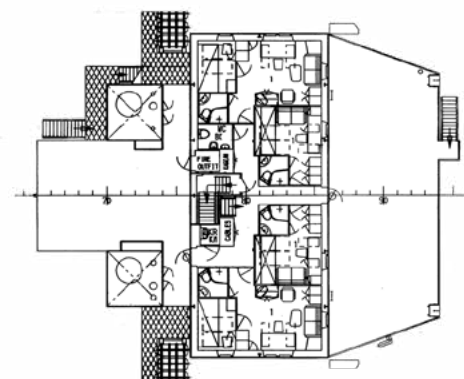
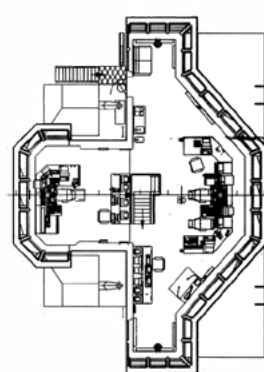
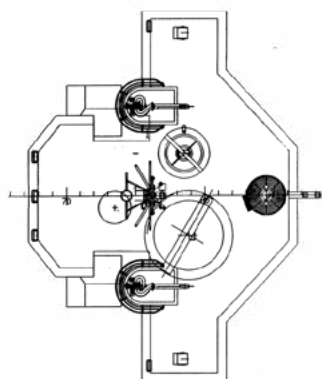
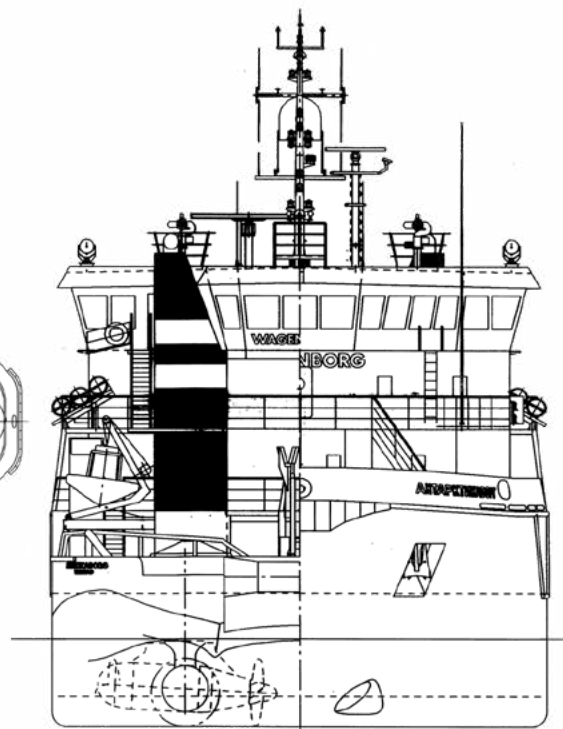
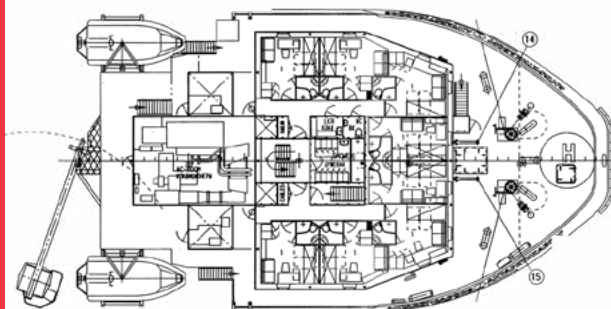
Bollard pull:	32 tons
Towing winch drum:	600 m, 40 mm
Maximum pull:	200 kN (2 minutes)
Rated pull:	100 kN

### NAUTICAL EQUIPMENT

- 1 x GMDSS A1, A2, A3
- 2 x Radar system
- 1 x COSPAS SARSAT EPIRB
- 1 x wind speed and direction indicator system
- 1 x gyro-compass system
- 2 x GPS-receivers
- 2 x SAT-COM C system
- 2 x SAT-COM B system
- 1 x echo sounder system
- 1 x SONAR

### AUXILIARIES

- 1 x diesel generator set Each 169 kVA / 400 V
- 1 x Emergency diesel generator 163 kVA - 400 V



## WAGENBORG OFFSHORE

P.O. Box 14, 9930 AA Delfzijl  
 Marktstraat 10, 9934 CK Delfzijl  
 The Netherlands  
 T +31 (0)596 636 911  
 F +31 (0)596 636 250  
 E offshore.contracts@wagenborg.com

