



ROYAL
WAGENBORG



TERMINAL EEMSHAVEN

GENERAL DETAILS EEMSHAVEN

Access from/to sea	No restrictions
Distance pilot station/quay	23 nautical miles
Road access	N33, N46
Operational draught	10-14 meter (under normal conditions)

Tidal variation

	High (rel. to N.A.P.)	Low (rel. to N.A.P.)	Mean range
Mean spring tide	+1,19 meter	-1,59 meter	2,78 meter
Mean tide	+1,09 meter	-1,40 meter	2,49 meter
Mean neap tide	+0,90 meter	-1,23 meter	2,13 meter

LLWS 2,03 meter below N.A.P.

EMMAHAVEN (NORTHERN QUAY)

Port basin

Draught	10 meter
Length	500 meter
Bottom width	120-150 meter

Mooring facilities

Mooring posts	12
Distance between posts	29 meter
Total length	322 meter
Capacity	25 ton

RoRo ramp (for project cargo)

Width quay side	8,0 meter
Width vessel side	5,9 meter
Length (fixed part quay side)	31,0 meter
Length (hinged part at end)	8,0 meter
Max. allowed capacity/axle	14,2 ton
Maximum total capacity	340,0 ton
Owner:	Wagenborg Stevedoring

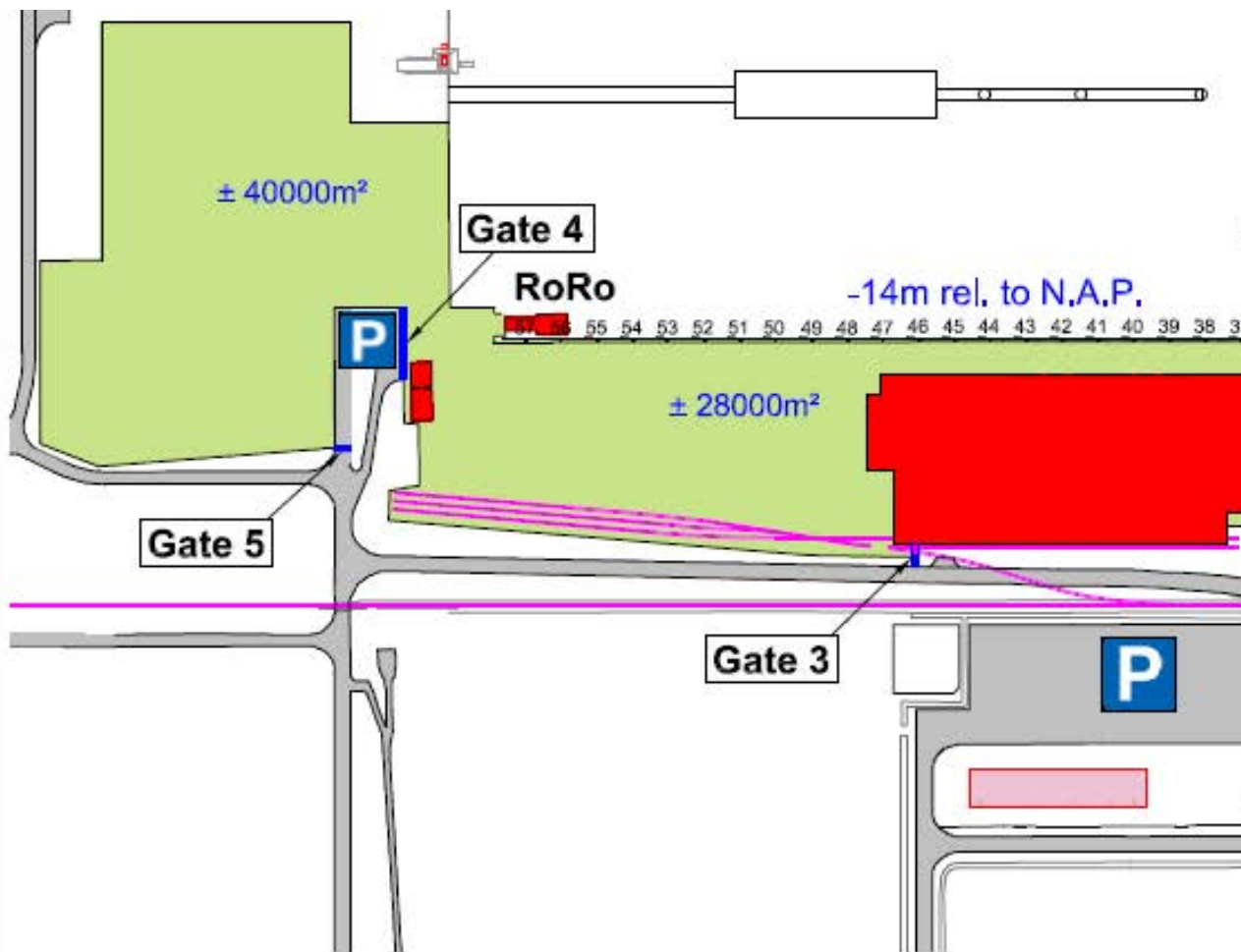
Only to be used after detailed consultation

DEVELOPMENT MOORING POSTS EASTERN QUAY

Mooring posts	10
Distance between posts	25 meter
Total length	175 meter
Capacity	25 ton

Port equipment

Harbour cranes on rail	tot 25 t capaciteit
Reach stacker	tot 40 t capaciteit
Forklifts	tot 28 t capaciteit
Additional equipment/crane capacity upon request	



JULIANAHAVEN (SOUTHERN QUAY, BOLLARD 1-24, 32-57)

Port basin

Draught	14	meter
Length	1.200	meter
Bottom width	200-250	meter

Quay

Total quay length	1.040	meter
Quay capacity	2,5-10	ton/m ²
Quay level quay side	4,4	meter

Bollards and fenders

Quay bollard spacing	20	meter
Quay bollard capacity	800	kN h.o.h.
Fender spacing	20	meter
Fender bollard capacity	200	kN h.o.h.

RoRo ramp

Width quay side	8	meter
Width vessel side	12	meter
Length	35	meter
Max. allowed capacity/axle	52	ton
Maximum total capacity	90	ton
Working angle	7,5	° maximaal
Ownership: Wagenborg Stevedoring		

Storage area

Number of multi-purpose warehouses	11
Multi-purpose warehouse area	40.000 m ²
Number of insulated warehouses	7
Insulated warehouse area	24.000 m ²
Total covered area	64.000 m ²
Total storage area outside	100.000 m ²

Sugar terminal

Dimensions	296x69x33	meter
Storage capacity	100.000	ton

Rail connections

Covered platforms	1	
Length	171	meter
Uncovered platforms	5	
Length per platform	190-400	meter

Shore Power Eemshaven

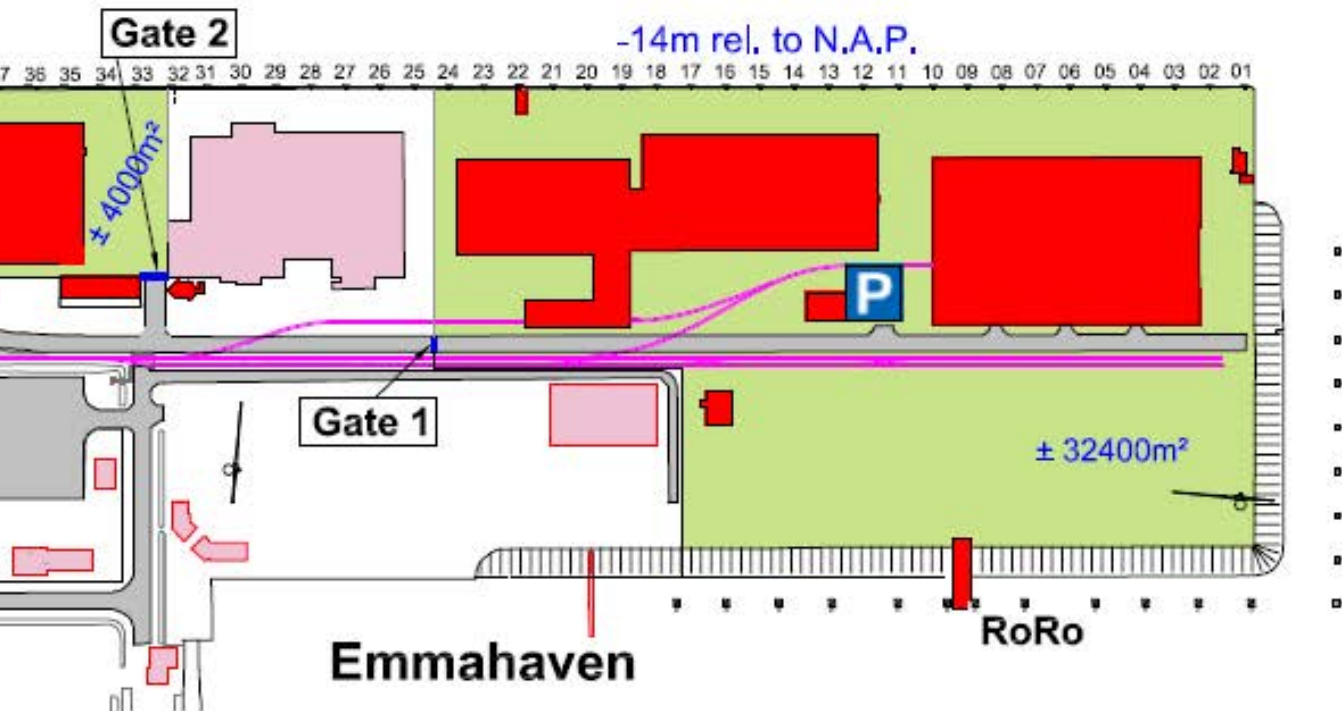
400V/125A – 50 Hz

CERTIFICATIONS

The Wagenborg Stevedoring Terminal/Wagenborg Stevedoring is ISPS, AEO, ISO9001 and ISO14001 certified.



Julianahaven



Royal Wagenborg was founded in 1898. The company continuously invests in various means of transport to serve the needs of a broad variety of customers by sea, shallow water and road offering a complete chain of transport.

Wagenborg companies are, amongst others, involved in shipping, stevedoring, forwarding, crane rental, heavy lifting, heavy transport, oil- and gas related services, towage and passenger services. Our integrated logistics solutions are flexible and reliable, provided by our dedicated crew of more than 3,000 employees.

Royal Wagenborg has identified quality, health, safety and the environment as key factors. Wagenborg Shipping manages its quality according to the ISO 9001, ISO 14001 and AEO. Our cargo vessels are ISM and ISPS-certified.

Head office:

WAGENBORG SHIPPING B.V.

Marktstraat 10, 9934 CK Delfzijl, The Netherlands
P.O. Box 14, 9930 AA Delfzijl, The Netherlands
T +31 596 636 911
E chartering@wagenborg.com

Agency/Clearance at Delfzijl, Eemshaven and Groningen:

WAGENBORG AGENCIES B.V.

Handelskade Oost 21, 9934 AR Delfzijl, The Netherlands
P.O. Box 14, 9930 AA Delfzijl
T +31 596 636 254
E agency@wagenborg.com

Agency/Clearance at Amsterdam, Beverwijk and IJmuiden:

WAGENBORG AGENCIES B.V.

Vredeweg 36A, 1505 HH Zaandam, The Netherlands
T +31 75 615 98 32
E agency.amsterdam@wagenborg.com

Agency/Clearance at Rotterdam, Dordrecht and Moerdijk:

WAGENBORG AGENCIES B.V.

Ridderhaven 27, 2984 BT Ridderkerk, The Netherlands
T +31 180 465 215
E agency.rotterdam@wagenborg.com

WAGENBORG STEVEDORING B.V.

Handelskade Oost 21, 9934 AR Delfzijl, The Netherlands
P.O. Box 14, 9930 AA Delfzijl
T +31 596 636 911
E stevedoring@wagenborg.com

WAGENBORG PROJECTS & LOGISTICS B.V.

Marktstraat 10, 9934 CK Delfzijl, The Netherlands
P.O. Box 14, 9930 AA Delfzijl
T +31 596 636 911
E logistic@wagenborg.com

WAGENBORG PROJECTS & LOGISTICS B.V.

Ridderhaven 27, 2984 BT Ridderkerk, The Netherlands
T +31 180 41 1169
E logistic@wagenborg.com

Branch office Sweden:

WAGENBORG SHIPPING SWEDEN AB

Hans Michelsensgatan 1B
P.O. Box 207, SE-201 22 Malmö, Sweden
T +46 409 37 100
E chartering.sweden@wagenborg.se

Branch office North America:

WAGENBORG SHIPPING NORTH AMERICA INC.

507 Place d'Armes, Suite 2100
Montreal, Quebec
H2Y 2W8
Canada
T +1 514 288 8282
E info@wagenborgna.ca

Branche office Spain:

Wave Shipping S.L.

Calle Lira, N° 1. Esc. Izq., 1° B.
28007 Madrid, Spain
T +34 917 253 763
E wave@wvaship.com

