



F-class

TECHNICAL INFORMATION



F-class - 13.500 DWCC

Box shaped/ Single-decker, incl. movable bulkheads. Ice Class 1A.
Lakes/Grain/ CO₂ fitted.

GENERAL PARTICULARS

Ships	Beatrix, Finnborg, Fivelborg, Flevoborg, Fraserborg, Fuldaborg
Shipyard	Ferus Smit GmbH.
Classification	Bureau Veritas
Class notations	I + HULL + MACH General cargo ship; Container ship Unrestricted navigation +AUT-UMS, +SYS-NEQ, ICE CLASS IA
Ice class	Finnish/Swedish 1A
Port of registry	Delfzijl
Flag	Dutch
Year	2009 - 2011

MAIN PARTICULARS

DWAT	14.000	mt
DWCC summer	13.500	mt
Length over all	154,60	m
Breadth over all	17,20	m
Draft summer	8,190	m
Draft in ballast	5,020	m
TPC SSW	24,65	mt/cm
Air draft in ballast	29,00	m
Depth (moulded)	11,55	m
GT	8.911	
NT	4.419	

ENGINES

Main engine	Wärtsilä 9L32C, 4.500 kW
Propeller	Single ccp, 4 blades, Ø 4.200 mm
Bow thruster	640 kW

HOLDS & HATCHES

Holds	2 holds, 2 hatches. Fully open hatch, no understow, fully box and double skinned.
Hatches	Coops & Nieborg steel pontoon hatches.

CARGO CAPACITIES

Hold dimensions	50,40 x 14,34 x 11,47m 61,60 x 14,34 x 11,47m
Total intake	606.781 cbft grain/bale
Hold #1	255.982 cbft grain/bale
Hold #2	350.799 cbft grain/bale

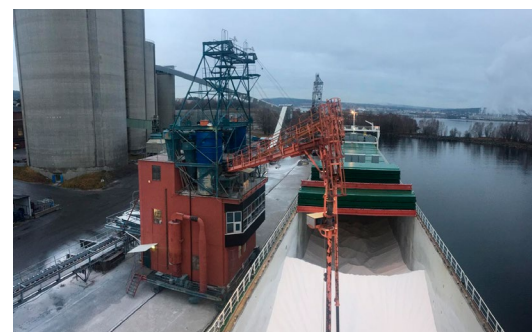
BULK HEADS

Vessel is equipped with 2 moveable bulkheads, moveable by means of hatch cover gantry crane.

Strengths

Max pressure tanktop	15,00 mt/m ²
Max pressure weatherdeck	1,75 mt/m ²

Uniform

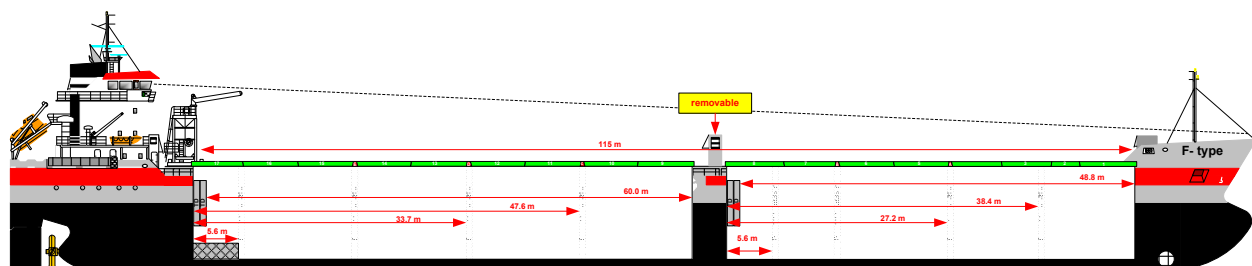
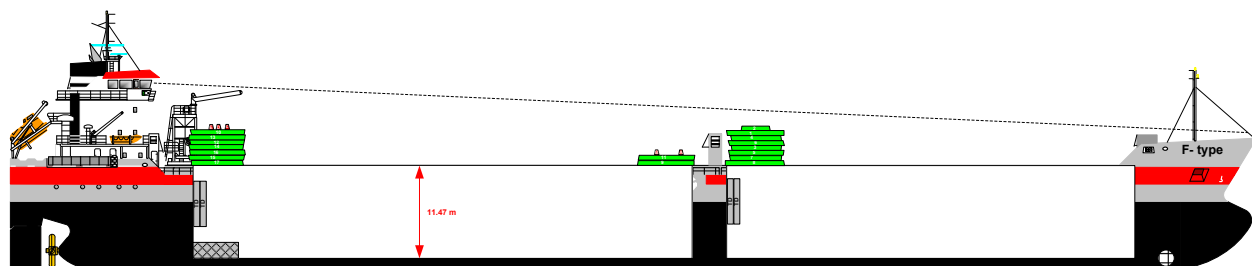
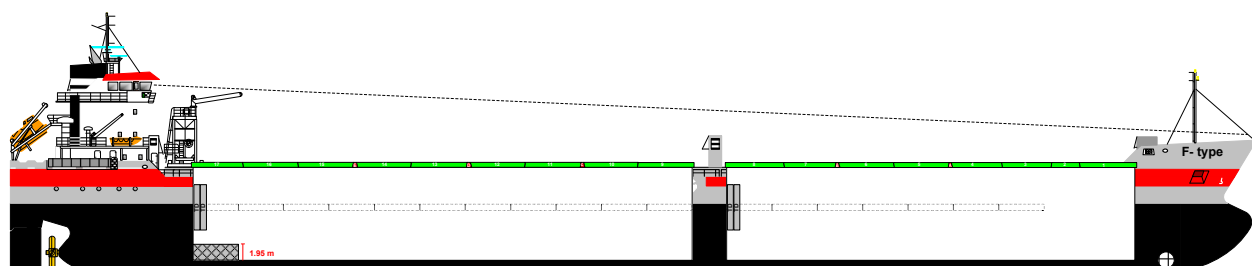
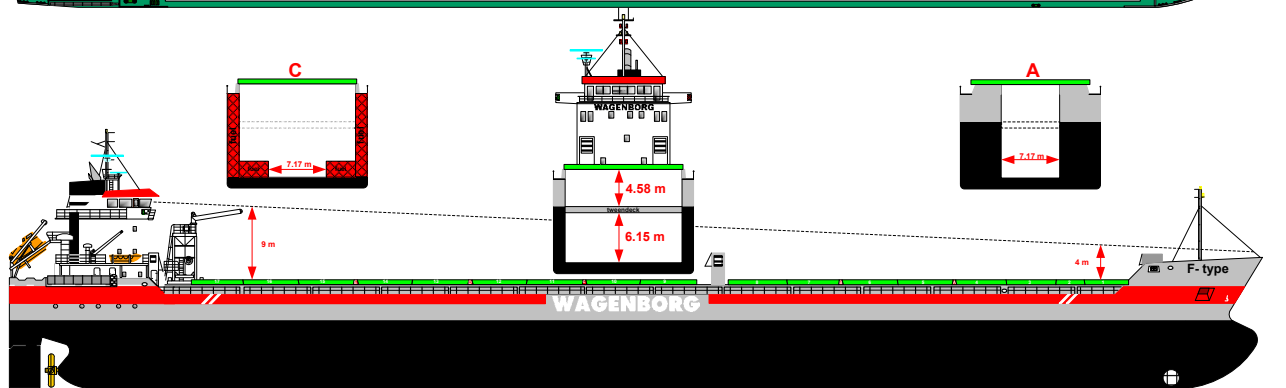
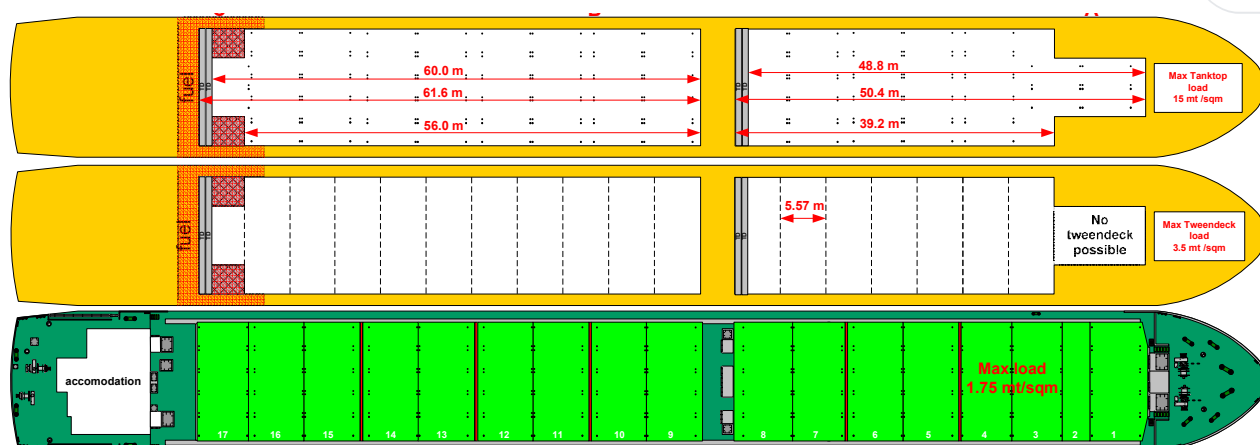


Wagenborg Shipping

Marktstraat 10, 9934 CK Delfzijl, Netherlands | P.O. Box 14, 9930 AA Delfzijl, Netherlands
T +31 596 636 911 | E chartering@wagenborg.com | wagenborg.com



F-class - stowage plan



Wagenborg Shipping

Marktstraat 10, 9934 CK Delfzijl, Netherlands | P.O. Box 14, 9930 AA Delfzijl, Netherlands
T +31 596 636 911 | E chartering@wagenborg.com | wagenborg.com