

Welcome to Royal Wagenborg

As experts in international transport by road and water, we offer custom made solutions for every transport need, expertly and with dedication. At Royal Wagenborg the word "impossible" does not exist. We believe that there is a solution for every transport requirement or logistical problem. We offer an integrated approach, including project support, equipment, experienced employees and a global network, reason why our clients have come to increasingly rely on our knowledge and expertise. At Royal Wagenborg safety and reliability are paramount. We are committed to providing you with the highest standard of quality.

11.850 DWT MULTIPURPOSE DRY CARGO CARRIER

Royal Wagenborg in cooperation with Ferus Smit Shipyards, Westerbroek, has developed a new serie of 2x 12000 DTW multipurpose container vessels.

These vessels have a new designed bulbless bow, combined with a ducted propellor and a 2970kw main engine. This results in a smooth, economical sailing vessel with excellent performance especially during rough weather conditions. A 600kw tunnelthruster is installed to assist during manoeuvring with low speed.

The gearless vessels have two box shaped holds with a total capacity of 503.500 cft, enclosed by a double hull construction and covered by pontoon hatches.

In the holds are two complete separation bulkheads which can be placed on several positions. These four pontoons can also be used in a tweendeck position.

Furthermore the holds are equipped with container sockets in the tanktop and lashing pots in the sides.

The vessels are designed for world wide trade and have also swedish/finnish iceclass 1a.

Dedicated fuel tanks make an efficient switch over between different grades of fuel possible. The capacity of bunkers gives the vessels a cruising range of approx. 28 days. A slobtank with dedicated pump is provided to create the possibility to discharge "dirty" washwater to shore facilities.

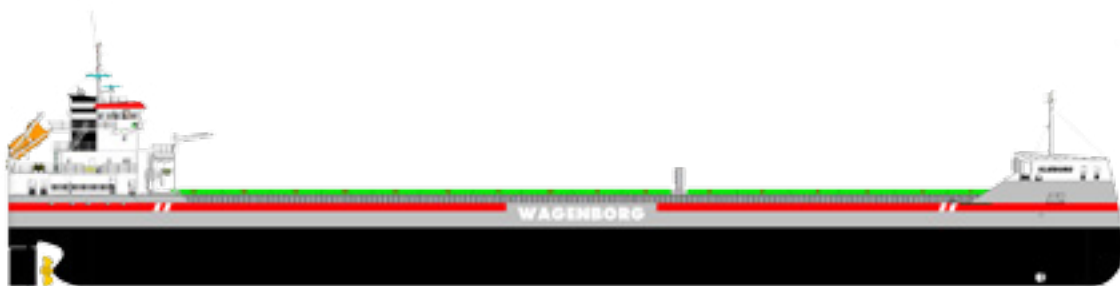
Equipped with intergrated bridge incl. V-sat, sat-tv and remote monitoring the vessels are build according the latest wagenborg standards as to vesatility, reliability and efficiency.

Wagenborg Shipping

Wagenborg Shipping is a member of Royal Wagenborg. Founded in 1898, the company continuously invests in various means of transport to serve the needs of a broad variety of customers by sea, shallow water and road offering a complete chain of transport.

Wagenborg companies are, amongst others, involved in shipping, stevedoring, road transport, forwarding, warehousing, crane rental, heavy lifting, heavy transport, oil- and gas related services, towage and passenger services. Our integrated logistics solutions are flexible and reliable, provided by our dedicated crew of more than 3500 employees.

Royal Wagenborg has identified quality, health, safety and the environment as key factors. Wagenborg Shipping manages its quality according to the ISO 9001, ISO 14001, AEO and IIP-standards. Our cargo vessels are ISM and ISPS-certified.



GENERAL PARTICULARS

DWAT	11.850
DWCC Summer	10.700
DWCC Winter	10.400
GT/NT	7.367/3.688
LOA	142.65m
LBPP	139.42m
BOA	15.87m
Moulded depth	10.78m
Draft Summer/Winter	7.73/7.57m
Height WL-HC in ballast	7.90m
Airdraft in ballast	30.60m
Built	2012-2013
Flag	Dutch
Homeport	Delfzijl
Iceclass	Finnish/Swedish 1A
Shipyard	Ferus Smit NL
General description:	HULL+MACH, AUT-UMS, SYS-NEQ 1, General cargo ship, container ship, Heavy cargo, unrestricted navigation, Ice class 1A, LASHING MON-SHAFT

ENGINE

Main engine	MA 9M25C 4.000kW
Speed/consumption	12.50kn/16.00mts
Fuel	IFO RMG 380 ISO 8217:2005
Gear	Gearless
Bowthruster	600kW

HOLDS/HATCHES

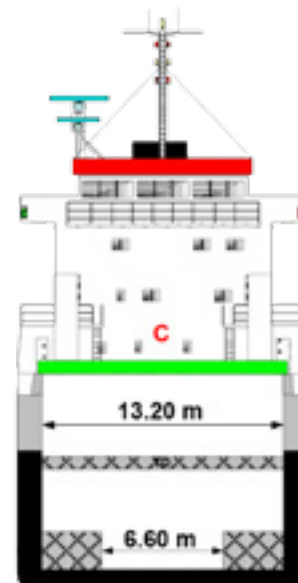
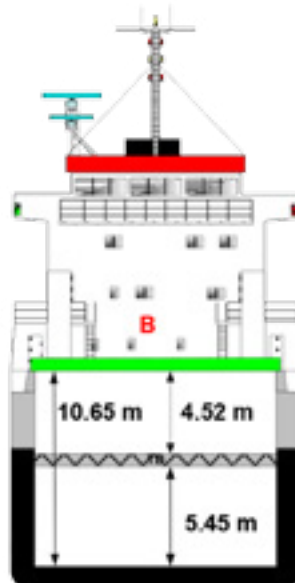
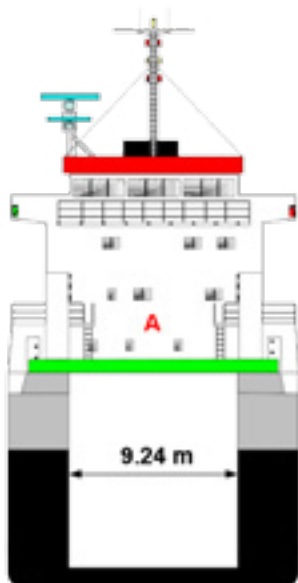
Type of holds	Box
Capacity	503.517cbft including 2moveable bulkheads
Capacity hold 1	190.947cbft incl. 1 moveable bulkhead
Capacity hold 2	312.570cbft incl. 1 moveable bulkhead
Tanktop strength	15.00mt/m2
Weather deck strength	1.75mt/m2
Strongbeam	No
Dimensions hold 1	41.00x13.20x10.78
Dimensions hatch 1	41.00x13.20
Dimensions hold 2	63.63x13.20x10.78
Dimensions hatch 2	63.63x13.20
Hatchcover type	Coops and Nieborg Pontoon Hatch cover system
Electrical ventilation	Holdventilation 12 air changes per hour. Both holds are fitted with dehumidifier system
Various	IMO, Co2, Suez, Panama, Great Lakes, and AWWF fitted

INSURANCE

Classification	Bureau Veritas
P and I club	North of England P&I Association
H&M Insurer	Loyal Insurance Broker BV
Insurance value	Euro 19.000.000,-

Vxxl-class sister vessels

Vikingbank	2012
Vlieborg	2013
Volgaborg	2013



ROYAL WAGENBORG

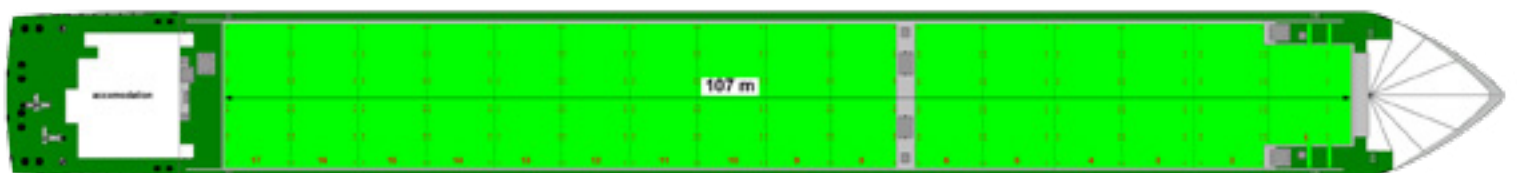
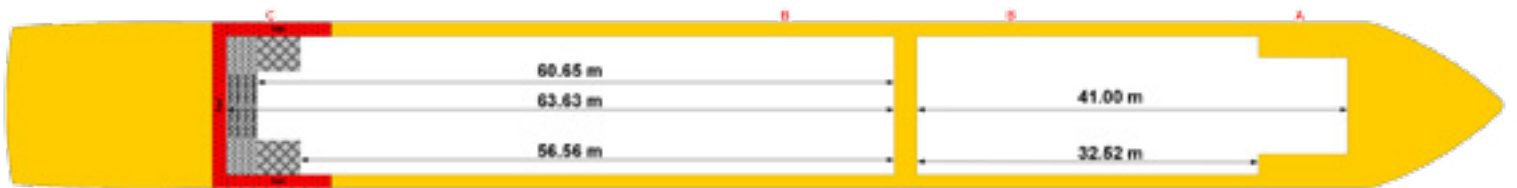
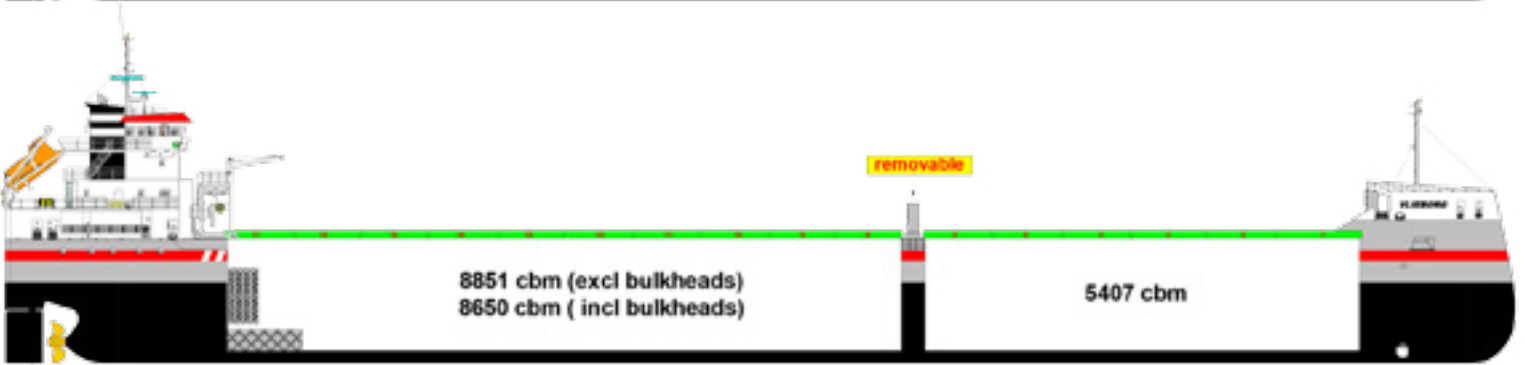
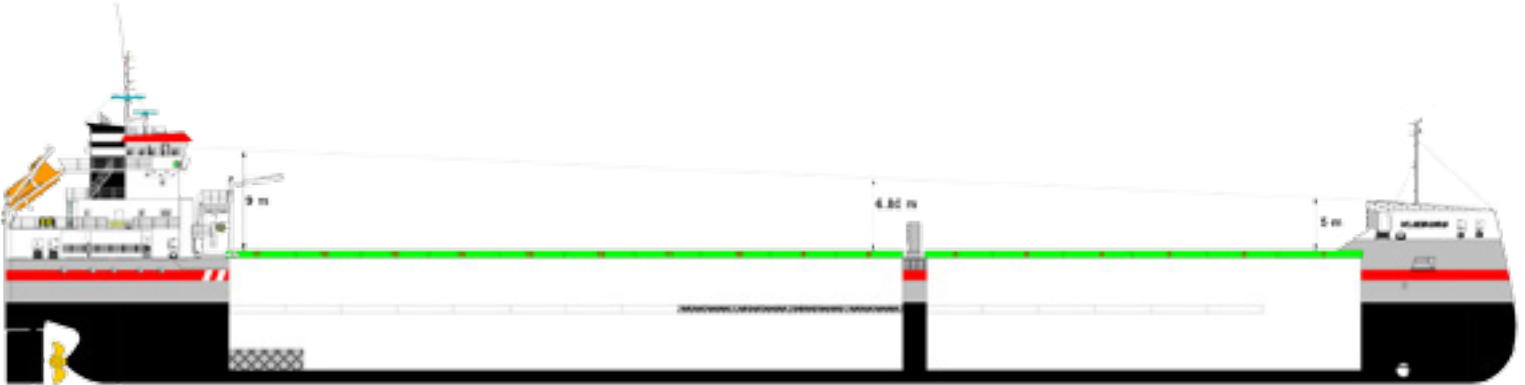
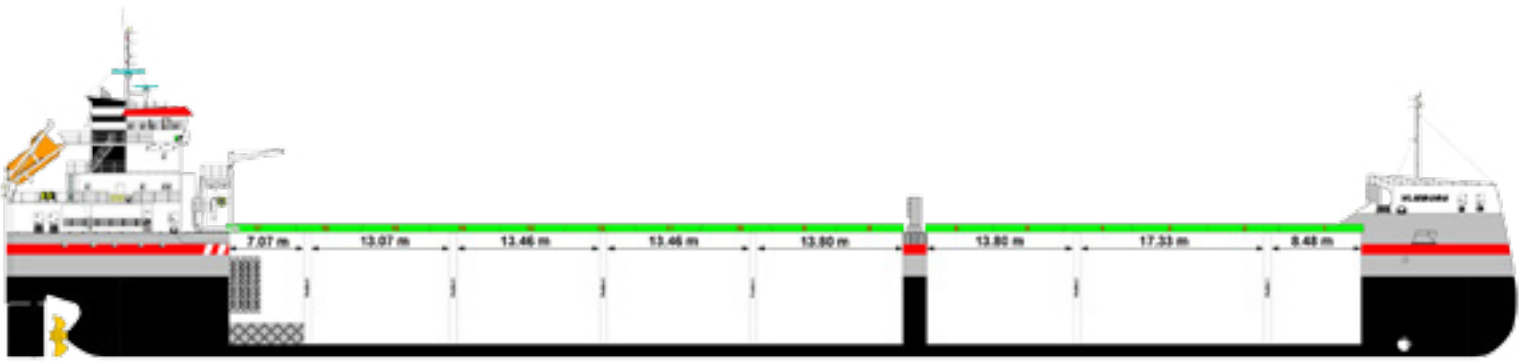
P.O. Box 14, 9930 AA Delfzijl
Marktsstraat 10, 9934 CK Delfzijl
The Netherlands

T +31(0)596 636 911

F +31(0)596 636 250





E info@wagenborg.com

WAGENBORG V_{xxl}-CLASS



Head office**ROYAL WAGENBORG**

Marktstraat 10
P.O. Box 14, 9930 AA Delfzijl, NL
T +31(0) 596 636 911
F +31(0) 596 636 250
E info@wagenborg.com

 www.facebook.com/royalwagenborg
 www.youtube.com/royalwagenborg
 www.twitter.com/royalwagenborg
 www.linkedin.com/company/wagenborg

Oil & Gas**WAGENBORG OFFSHORE B.V.**

Marktstraat 10
P.O. Box 14, 9930 AA Delfzijl, NL
T +31 (0)596 636911
F +31 (0)596 636250
E offshore.contracts@wagenborg.com

WAGENBORG FOXDRILL B.V.

Kampenstraat 14
P.O. Box 404, 7570 AK Oldenzaal, NL
T +31 (0)541 580500
F +31 (0)541 580505
E foxdrill@wagenborg.com

WAGENBORG KAZAKHSTAN B.V.

Marktstraat 10
P.O. Box 14, 9930 AA Delfzijl, NL
T +31 (0)596 636911
F +31 (0)596 636250
E offshore@wagenborg.com

WAGENBORG OILFIELD SERVICES

629800, Russian Federation
Yamalo-Nenetskiy autonomous district Noyabrsk
Promzona, Panel 8
T +7 3496 354842
F +7 3496 354852
E info.russia@wagenborg.com

WAGENBORG MIDDLE EAST

P.O.Box 37296, Jebel Ali Free Zone (South),
Near Redington, Dubai, U.A.E.
T + 971 4 8894797
F + 971 4 8894798

WAGENBORG SHIPPING B.V.

Marktstraat 10
P.O. Box 14, 9930 AA Delfzijl, NL
T +31(0)596 636 911
F +31 (0)596 636 250
E chartering@wagenborg.com

WAGENBORG FAR EAST REP. OFFICE

Yuandong building rm. 1703
1101 Pudong nan road, Shanghai, China
T +86-13817579651 (mobile)
E shanghai.info@wagenborg.com

WAGENBORG SHIPPING SWEDEN AB

Fosievägen 17
P.O. Box 8054, SE-200 41 Malmö, Sweden
T +46 (0)40 93 71 00
E info.sweden@wagenborg.com

WAVE SHIPPING, S.L.

Francisco Santos, 2 2º Izq.
28028 Madrid
T +34 917 253763
F +34 917 254022
E wave@waveship.com

WAGENBORG SHIPPING NORTH AMERICA INC.

500 Place d'Armes, Suite 2310
Montreal, Quebec, H2Y 2W2, Canada
T +1 514 2888282
F +1 514 8422744
E info@wagenborgna.ca

WAGENBORG SOUTH EAST ASIA

15th Floor, A-Place Building, Coral Way
Central Business Park 1, Island 1A
Macapagal Avenue, Pasay City, Philippines 1308
Tel. +63 2 553 6866
Fax +63 2 828 6897

WAGENBORG SAINT PETERSBURG

5 Gapsalskaya street, office 614 St. Petersburg, Russia
T +7 (812) 714 98 05
F +7 (812) 714 97 83

WAGENBORG STEVEDORING B.V.

Handelskade Oost 21, 9934 AR Delfzijl, NL
T +31 (0)596 636911
F +31 (0)596 630417
E stevedoring@wagenborg.com

WAGENBORG PROJECTS & LOGISTICS B.V.

Marktstraat 10
P.O. Box 14, 9930 AA Delfzijl, NL
T +31(0)596 636 911
F +31 (0)596 636 250
E chartering@wagenborg.com

WAGENBORG PROJECTS & LOGISTICS B.V.

Ridderhaven 27, 2984 BT Ridderkerk, NL
T +31 (0)180 411169
F +31 (0)180 465351
E logistic@wagenborg.com

WAGENBORG NEDLIFT B.V.

Gideonweg 5
P.O. Box 254, 9700 AG Groningen, NL
T +31 (0)50 368 2800
F +31 (0)50 368 2849
E nedlift@wagenborg.com

WAGENBORG NEDLIFT B.V.

Diamantstraat 20
7554 TA Hengelo, NL
T +31 (0)74 245 4545
F +31 (0)74 245 4400
E nedlift@wagenborg.com

WAGENBORG TOWAGE B.V.

Marktstraat 10
P.O. Box 14, 9930 AA Delfzijl, NL
T +31(0)596 636 911
F +31 (0)596 636 250
E towage@wagenborg.com

Shipping**Storage & warehousing****Projects & Logistics****Heavy lift & transport****Towage**