

Welcome to Royal Wagenborg

As experts in international transport by road and water, we offer custom made solutions for every transport need, expertly and with dedication. At Royal Wagenborg the word "impossible" does not exist. We believe that there is a solution for every transport requirement or logistical problem. We offer an integrated approach, including project support, equipment, experienced employees and a global network, reason why our clients have come to increasingly rely on our knowledge and expertise. At Royal Wagenborg safety and reliability are paramount. We are committed to providing you with the highest standard of quality.

17.323 DWT MULTIPURPOSE DRY CARGO CARRIER

Royal wagenborg in cooperation with Hudong-Zhonghua Shipbuilidin Co. Ltd, China has developed a serie of 21x 17.300 DTW multi-purpose dry cargo vessels vessels.

These vessels are designed with two fully box, high volume, holds of 36 and 52m length and completely open hatch.

The vessels are equipped with a full tweendeck, consisting of removable tweendeck pontoons which can be fitted at different heights. The tweendecks can also be used as class approved separation bulkheads in various positions for efficient loading of grains and other bulk cargos as well as separation of different types of cargo. Tweendecks can be used as vertical bulkheads at every 20ft interval.

Solidly constructed to ice class 1a, these vessels are fully fitted to trade worldwide, including the Saint Lawrence Seaway, Panama Canal and Suez Canal.

With 3 cranes fixed on portside the vessels have a lifting capacity of about 10 tons. Each crane with a capacity of 60 mts at a reach of upto 16m or capacity of 40 mts at a reach of upto 28m.the free distance between the cranes is 31 meters.

With these vessels, Royal Wagenborg has set new standards as to versatility, reliability and efficiency.

Wagenborg Shipping

Wagenborg Shipping is a member of Royal Wagenborg. Founded in 1898, the company continuously invests in various means of transport to serve the needs of a broad variety of customers by sea, shallow water and road offering a complete chain of transport.

Wagenborg companies are, amongst others, involved in shipping, stevedoring, road transport, forwarding, warehousing, crane rental, heavy lifting, heavy transport, oil- and gas related services, towage and passenger services. Our integrated logistics solutions are flexible and reliable, provided by our dedicated crew of more than 3500 employees.

Royal Wagenborg has identified quality, health, safety and the environment as key factors. Wagenborg Shipping manages its quality according to the ISO 9001, ISO 14001, AEO and IIP-standards. Our cargo vessels are ISM and ISPS-certified.



GENERAL PARTICULARS

DWAT	17.323
DWCC Summer	15.750
DWCC Winter	15.550
GT/NT	11.864/5.650
LOA	142.90m
LBPP	133.36m
BOA	21.50m
Moulded depth	13.30m
Draft Summer/Winter	9.690/9.505m
Height WL-HC in ballast	10.50m
Airdraft in ballast	35.40m
Built	2006-2012
Flag	Dutch
Homeport	Delfzijl
Iceclass	Finnish/Swedish 1A
Shipyard	Hudong-Zhonghua, China
General description:	100A1, Strengthened for Heavy Cargoes, Any Holds May be Empty, Container Cargoes in all Holds and on Upper Deck and on all Hatch Covers, IWS, LI, LMC, UMS, NAVI

ENGINE

Main engine	Wärtsilä 6L46F 7500 kW
Speed/consumption	14 kn/20.00mts basis
Fuel	7.60m draft IFO RMG 380 ISO 8217:2005
Gear	3 cranes each with capacity of 60 mts
Bowthruster	750kW

HOLDS/HATCHES

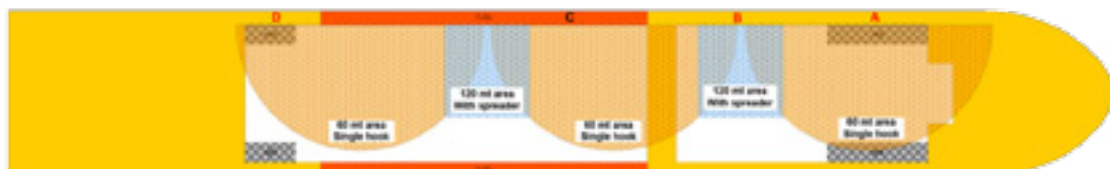
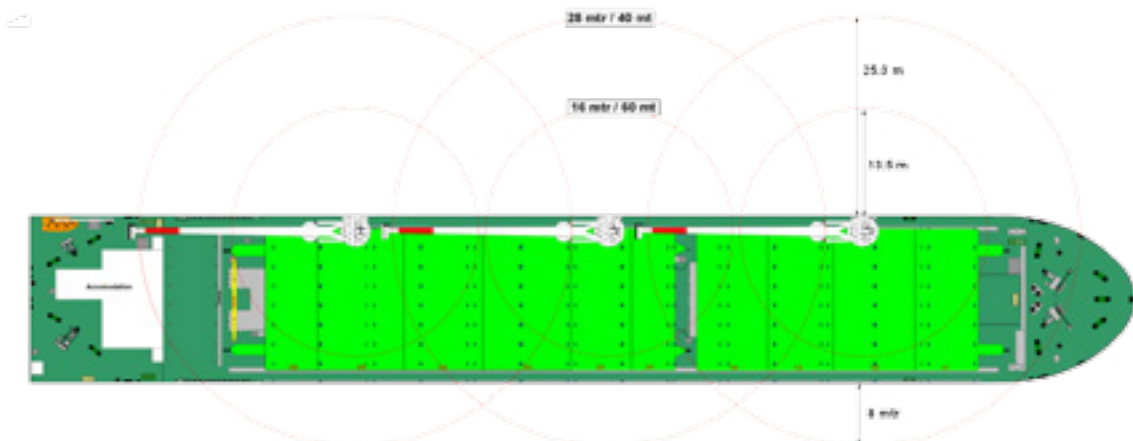
Type of holds	Box
Capacity	707.633cbft
Capacity hold 1	269.401cbft
Capacity hold 2	438.232cbft
Tweendecks	14 tweendeck pontoons
Tanktop strength	20.00mt/m2
Tweendeck strenght	4.00mt/m2
Weather deck strength	1.75mt/m2
Strongbeam	No
Dimensions hold 1	35.80x17.75x13.50m
Dimensions hatch 1	35.80x17.75
Dimensions hold 2	52.10x17.75x13.50m
Dimensions hatch 2	52.10x17.75
Hatchcover type	MacGregor Navire Hydraulic steel pontoon hatches
Electrical ventilation	Holdventilation 12 air changes per hour. Both holds are fitted with dehumidifier system
Various	IMO, Co2, Suez, Panama, Great Lakes, and AWWF fitted

INSURANCE

Classification	Lloyd's Register
P and I club	North of England P&I Association
H&M Insurer	Loyal Insurance Broker BV
Insurance value	Euro 30.000.000,-

A-class sister vessels

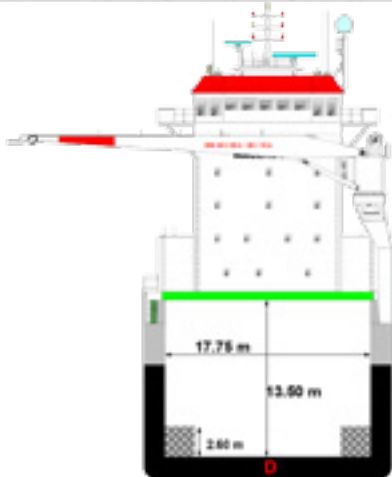
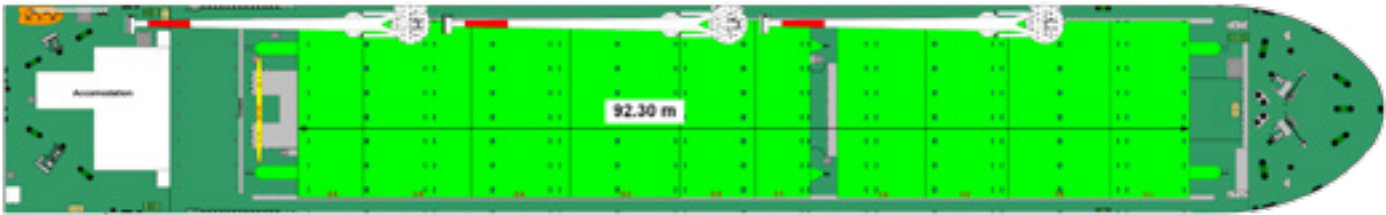
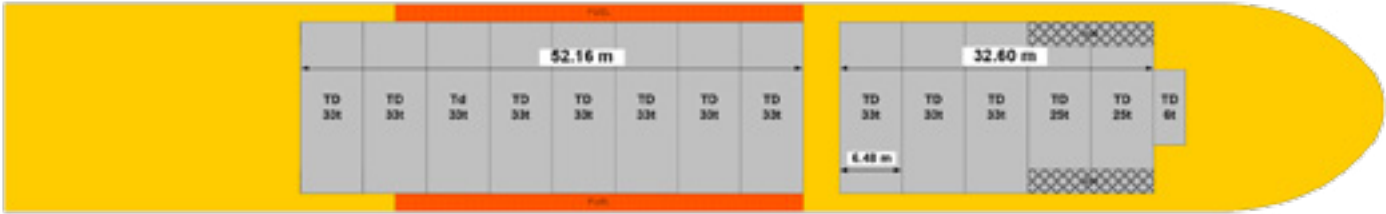
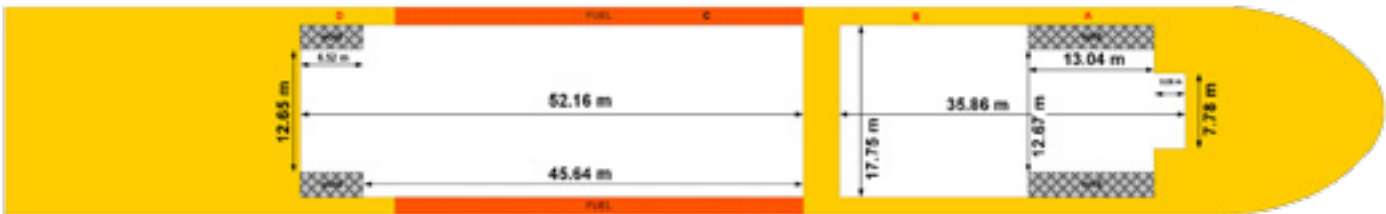
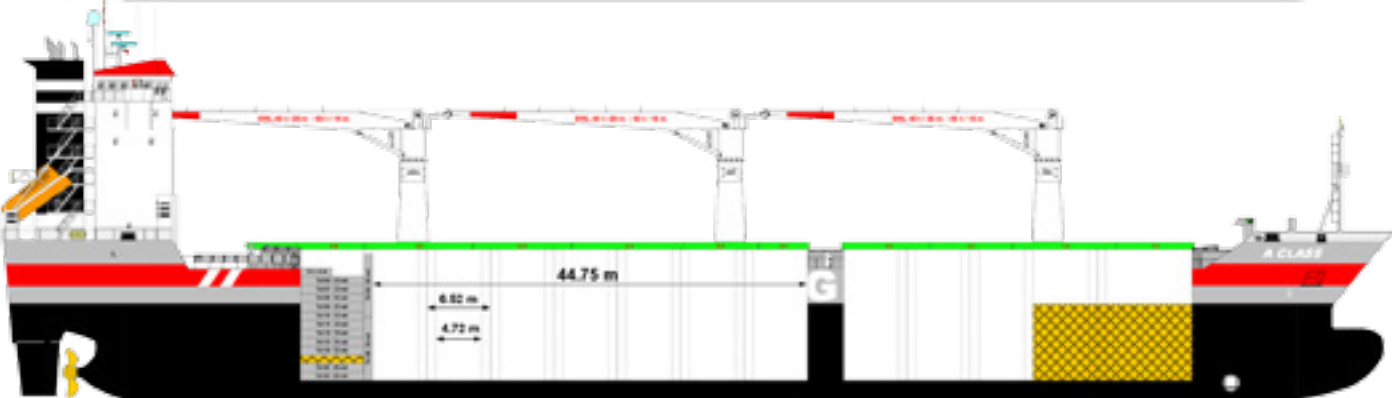
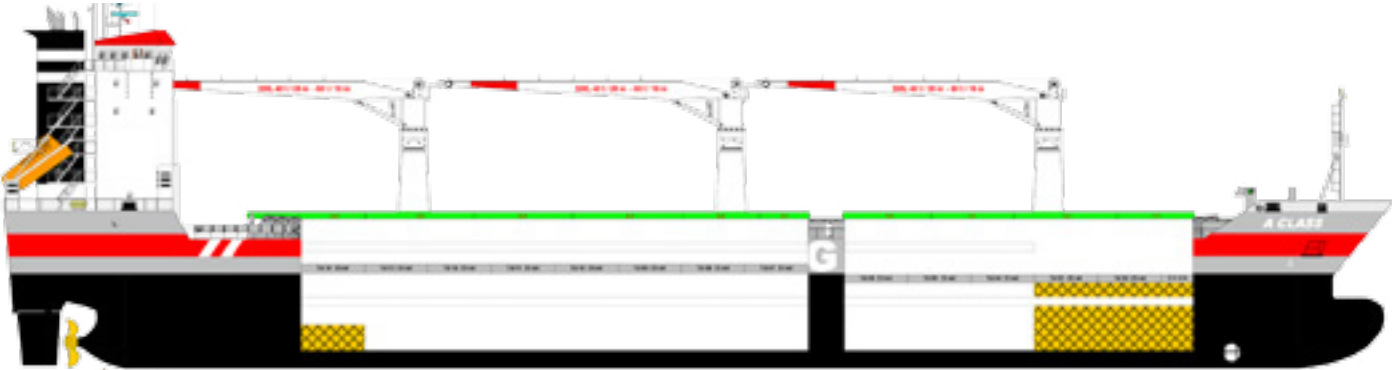
Amstelborg	2006
Arneborg	2006
Africaborg	2007
Amazoneborg	2007
Asiaborg	2007
Americaborg	2007
Australiaborg	2007
Azoresborg	2010
Arubaborg	2010
Albanyborg	2010
Aragonborg	2010
Andesborg	2011
Amurborg	2011
Alamosborg	2011
Adriaticborg	2011
Alaskaborg	2012
Avonborg	2012
Atlanticborg	2012



ROYAL WAGENBORG

P.O. Box 14, 9930 AA Delfzijl
Marktsstraat 10, 9934 CK Delfzijl
The Netherlands
T +31(0)596 636 911
F +31(0)596 636 250
E info@wagenborg.com





WAGENBORG A-CLASS



Particulars believed to be correct, but not guaranteed.

Head office**ROYAL WAGENBORG**

Marktstraat 10
P.O. Box 14, 9930 AA Delfzijl, NL
T +31(0) 596 636 911
F +31(0) 596 636 250
E info@wagenborg.com

 www.facebook.com/royalwagenborg
 www.youtube.com/royalwagenborg
 www.twitter.com/royalwagenborg
 www.linkedin.com/company/wagenborg

Oil & Gas**WAGENBORG OFFSHORE B.V.**

Marktstraat 10
P.O. Box 14, 9930 AA Delfzijl, NL
T +31 (0)596 636911
F +31 (0)596 636250
E offshore.contracts@wagenborg.com

WAGENBORG FOXDRILL B.V.

Kampenstraat 14
P.O. Box 404, 7570 AK Oldenzaal, NL
T +31 (0)541 580500
F +31 (0)541 580505
E foxdrill@wagenborg.com

WAGENBORG KAZAKHSTAN B.V.

Marktstraat 10
P.O. Box 14, 9930 AA Delfzijl, NL
T +31 (0)596 636911
F +31 (0)596 636250
E offshore@wagenborg.com

WAGENBORG OILFIELD SERVICES

629800, Russian Federation
Yamalo-Nenetskiy autonomous district Noyabrsk
Promzona, Panel 8
T +7 3496 354842
F +7 3496 354852
E info.russia@wagenborg.com

WAGENBORG MIDDLE EAST

P.O.Box 37296, Jebel Ali Free Zone (South),
Near Redington, Dubai, U.A.E.
T + 971 4 8894797
F + 971 4 8894798

Shipping**WAGENBORG SHIPPING B.V.**

Marktstraat 10
P.O. Box 14, 9930 AA Delfzijl, NL
T +31(0)596 636 911
F +31 (0)596 636 250
E chartering@wagenborg.com

WAGENBORG FAR EAST REP. OFFICE

Yuandong building rm. 1703
1101 Pudong nan road, Shanghai, China
T +86-13817579651 (mobile)
E shanghai.info@wagenborg.com

WAGENBORG SHIPPING SWEDEN AB

Fosievägen 17
P.O. Box 8054, SE-200 41 Malmö, Sweden
T +46 (0)40 93 71 00
E info.sweden@wagenborg.com

WAVE SHIPPING, S.L.

Francisco Santos, 2 2º Izq.
28028 Madrid
T +34 917 253763
F +34 917 254022
E wave@waveship.com

WAGENBORG SHIPPING NORTH AMERICA INC.

500 Place d'Armes, Suite 2310
Montreal, Quebec, H2Y 2W2, Canada
T +1 514 2888282
F +1 514 8422744
E info@wagenborgna.ca

WAGENBORG SOUTH EAST ASIA

15th Floor, A-Place Building, Coral Way
Central Business Park 1, Island 1A
Macapagal Avenue, Pasay City, Philippines 1308
Tel. +63 2 553 6866
Fax +63 2 828 6897

WAGENBORG SAINT PETERSBURG

5 Gapsalskaya street, office 614 St. Petersburg, Russia
T +7 (812) 714 98 05
F +7 (812) 714 97 83

Storage & warehousing**WAGENBORG STEVEDORING B.V.**

Handelskade Oost 21, 9934 AR Delfzijl, NL
T +31 (0)596 636911
F +31 (0)596 630417
E stevedoring@wagenborg.com

Projects & Logistics**WAGENBORG PROJECTS & LOGISTICS B.V.**

Marktstraat 10
P.O. Box 14, 9930 AA Delfzijl, NL
T +31(0)596 636 911
F +31 (0)596 636 250
E chartering@wagenborg.com

WAGENBORG PROJECTS & LOGISTICS B.V.

Ridderhaven 27, 2984 BT Ridderkerk, NL
T +31 (0)180 411169
F +31 (0)180 465351
E logistic@wagenborg.com

Heavy lift & transport**WAGENBORG NEDLIFT B.V.**

Gideonweg 5
P.O. Box 254, 9700 AG Groningen, NL
T +31 (0)50 368 2800
F +31 (0)50 368 2849
E nedlift@wagenborg.com

WAGENBORG NEDLIFT B.V.

Diamantstraat 20
7554 TA Hengelo, NL
T +31 (0)74 245 4545
F +31 (0)74 245 4400
E nedlift@wagenborg.com

Towage**WAGENBORG TOWAGE B.V.**

Marktstraat 10
P.O. Box 14, 9930 AA Delfzijl, NL
T +31(0)596 636 911
F +31 (0)596 636 250
E towage@wagenborg.com