 sign of solutions

## Welcome to Royal Wagenborg

As experts in international transport by road and water, we offer custom made solutions for every transport need, expertly and with dedication. At Royal Wagenborg the word "impossible" does not exist. We believe that there is a solution for every transport requirement or logistical problem. We offer an integrated approach, including project support, equipment, experienced employees and a global network, reason why our clients have come to increasingly rely on our knowledge and expertise. At Royal Wagenborg safety and reliability are paramount. We are committed to providing you with the highest standard of quality.

## ARMANBORG

The vessel, which was originally built by Wartsila Marine in Helsinki (Finland), was converted by Royal Niestern Sander shipyards in 2009, which extended its length by 15 metres in addition to other improvements.

The vessel has also been newly fitted with two main diesel generators of 1257 kW each as well as a bridge deck with a new steering console, a capped bow, a 40 ton line pull 75-ton brake holding winch and a 44 ton/m deck crane with 18.5 metres outreach.

"Armanborg" is an ice breaking support vessel with unrestricted navigation, Ice Class 1A, special service icebreaker. It has a 200 m<sup>2</sup> free main deck, with cargo railing and wooden deck covering and is suitable for anchor handling.

This vessel was upgraded for the harshest and most complex environments in combination with shallow draught and zero dumping arrangements. "Armanborg" meets the highest standards with regard to HSES&Q as well as the requirements of the Russian Maritime Register of Shipping and Bureau Veritas.

## Wagenborg Offshore

As an international offshore specialist and with many years of experience in the global oil and gas transport business, Wagenborg Offshore has committed professionals at its heart, carrying out complex logistic projects worldwide.

Wagenborg Offshore is a specialist in shallow water transport and has been operating in the Caspian Sea for decades with its dedicated vessels. The company also has vast experience and knowledge of ice navigation in Baltic and Scandinavian waters.

Wagenborg Offshore has state-of-the-art equipment and technologies that comply with the highest quality industry standards.

### GENERAL

Port of registry	Aktay, Kazakhstan
Flag	Republic of Kazakhstan
Yard	Wärtsilä Marine, Helsinki-Finland
Classification	I, Hull, Mach, Tug/Pusher, Unrestricted Navigation, Ice Class 1A, Special service: Ice Breaker. Bureau Veritas

### DIMENSIONS

Length over all:	45 m
Length dwt:	42,56 m
Breadth moulded:	12,50 m
Depth:	4,6 m
Design Draught Max:	2,7 m
Design Draught Min:	3,12 m
Gross Tonnage:	618 GT
Nett Tonnage:	185 NT
Deadweight:	406 t
Bollard pull:	24 t

### CAPACITIES

Fuel cargo tanks:	189 m3
Treated water tanks:	47 m3
Fresh water:	114 m3
Ballast water:	120 m3
Deck cargo space:	200 m3
Cargo sewage:	47 m3

### ACCOMODATION

2x single cabins  
4x two man cabins

### PROPULSION

Propeller diam. 2300 [mm] (1A Supper)  
Speed Est. 10.0 [knots] approx.  
Propulsion motor 1x 2157 [kW]  
Thruster 1x bow, 74 [kW]  
Steering Gear Ram type

### MAIN DECK EQUIPMENT

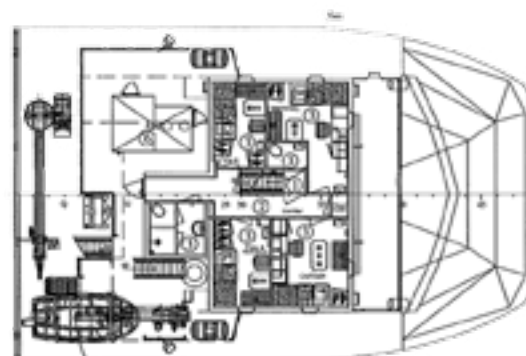
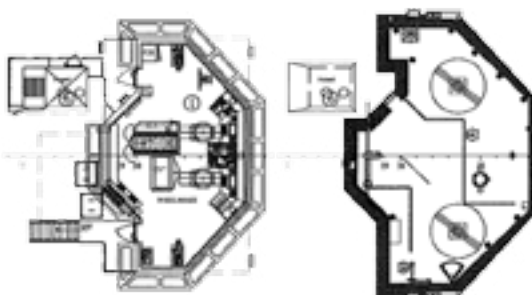
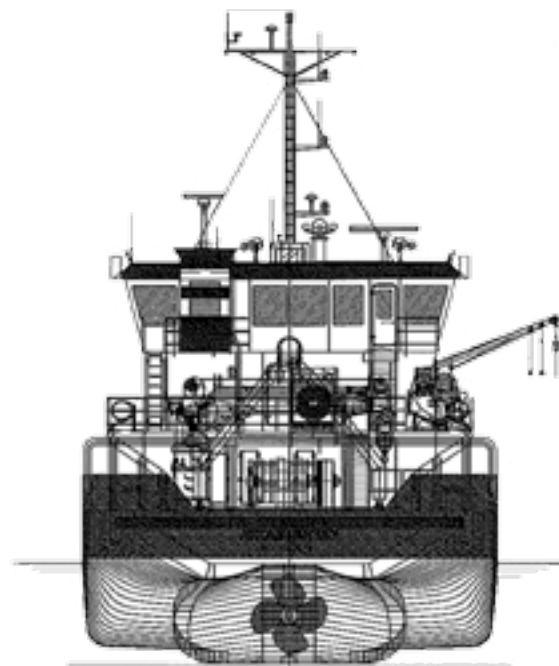
Towing Winch 40Ton line pull (1st Layer)  
75 Ton brake holding (1st Layer)  
Split drum (600/100m)  
Tugger Winch 5 tons line pull (1st Layer)  
Deck Crane: 44 Ton/m 18.5 m outreach  
A-frame foundation for existing A-frame

### AUXILIARIES

Main diesel generators 2 x 1257 [kW]  
Propulsion 690 VAC 2 x 1440 [kVA]  
Auxiliary power 2 x 175 [kVA]  
Emergency/Harbor power 215 [kVA]

### ENVIRONMENTAL FEATURES

Zero dumping / no polluting tanks adjacent to the outside hull.



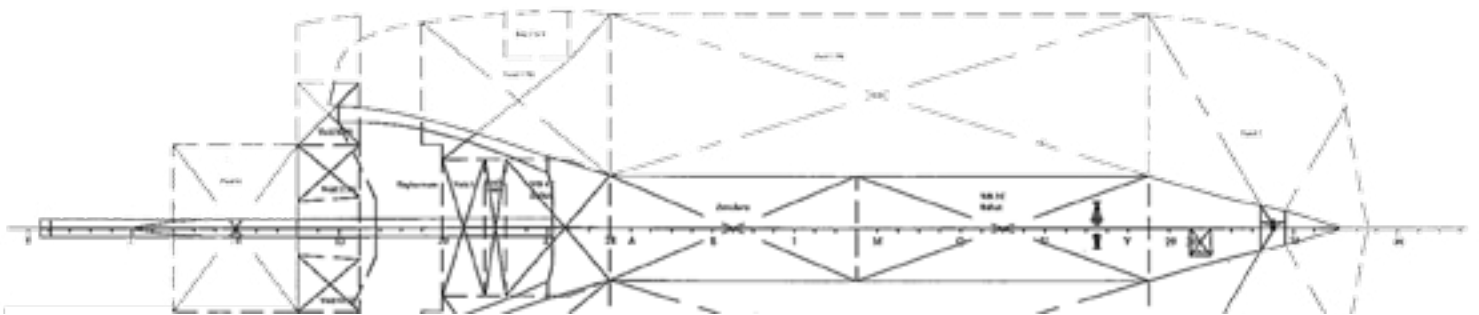
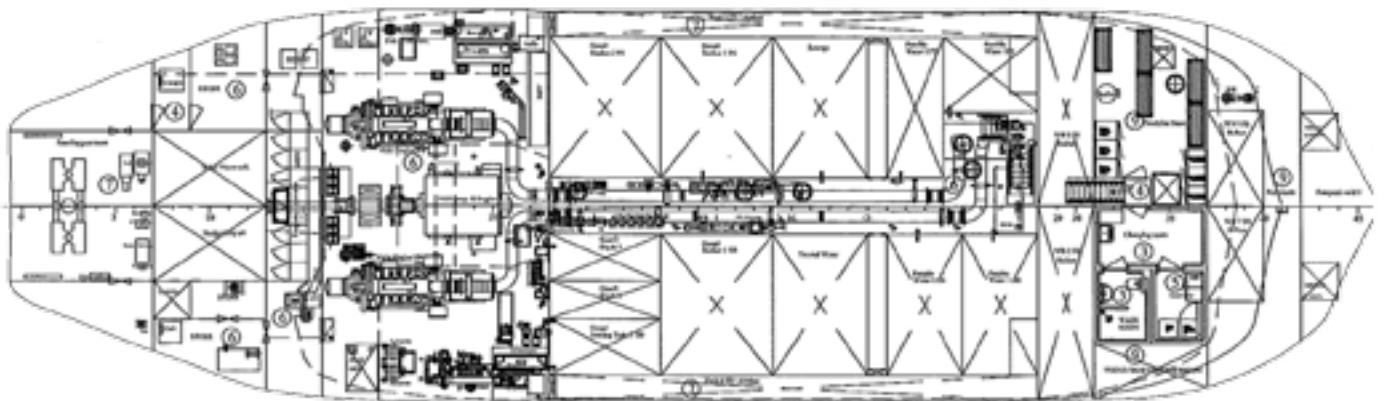
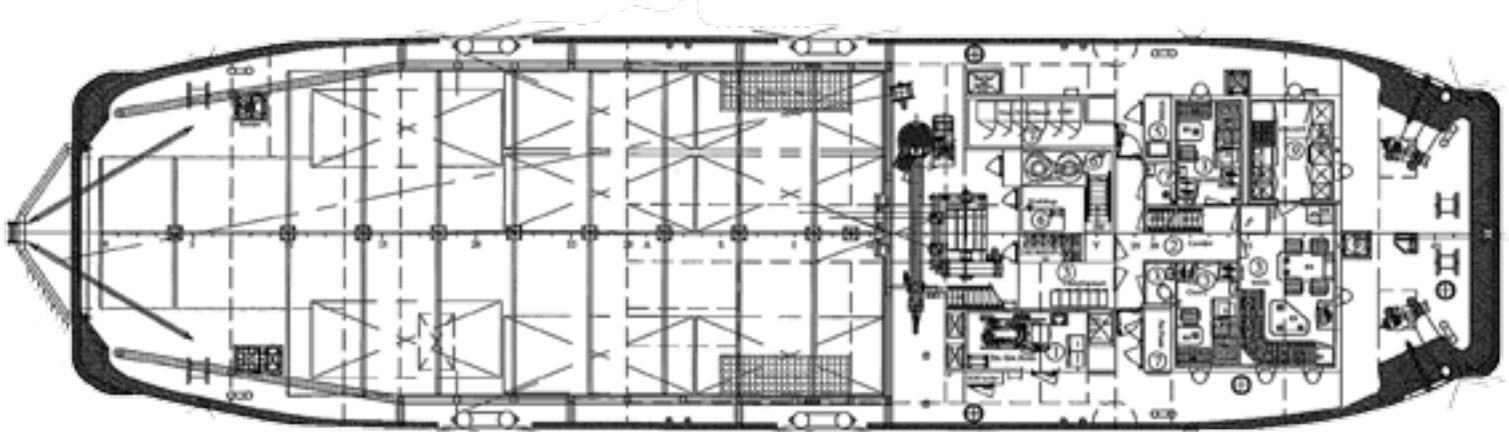
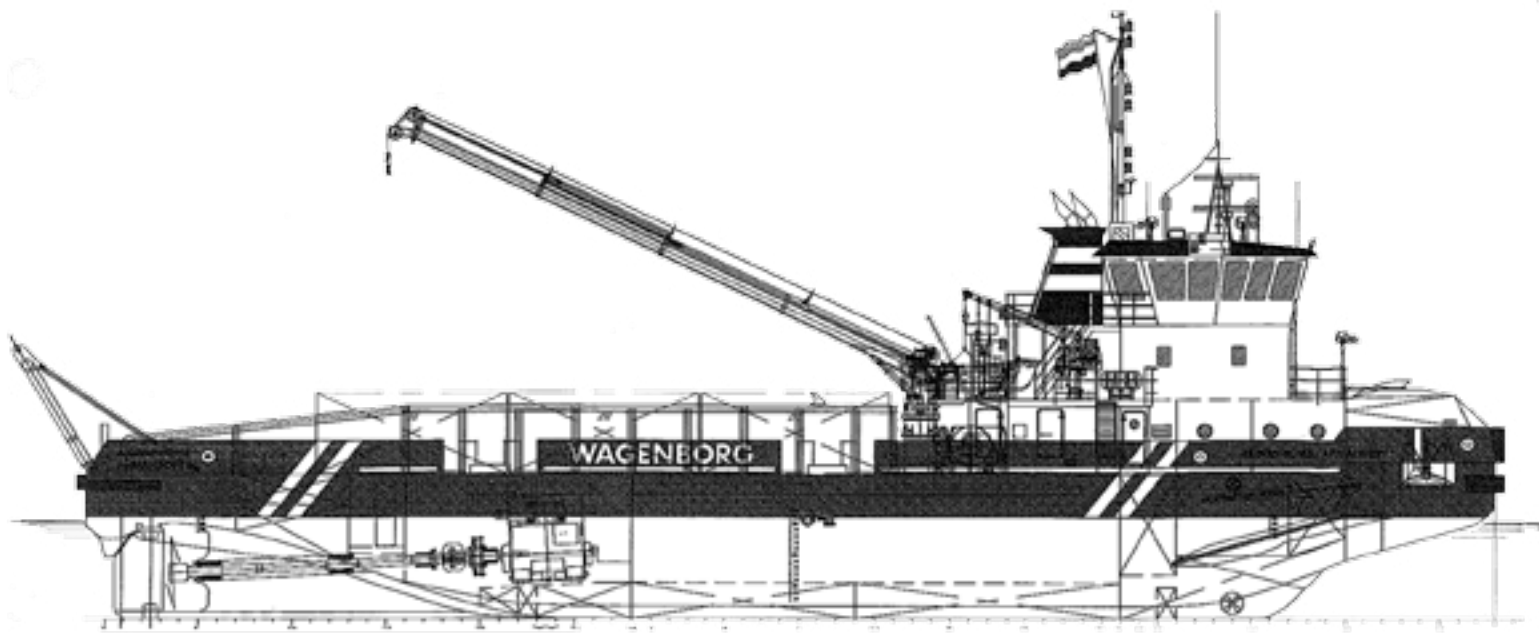
## WAGENBORG OFFSHORE

P.O. Box 14, 9930 AA Delfzijl  
Marktstraat 10, 9934 CK Delfzijl  
The Netherlands  
T +31 (0)596 636 911  
F +31 (0)596 636 250  
E offshore.contracts@wagenborg.com

[www.wagenborg.com](http://www.wagenborg.com)





Particulars believed to be correct, but not guaranteed.

# ICE BREAKING SUPPORT VESSEL



**Head office****ROYAL WAGENBORG**

Marktstraat 10  
P.O. Box 14, 9930 AA Delfzijl, NL  
T +31(0) 596 636 911  
F +31(0) 596 636 250  
E info@wagenborg.com

 [www.facebook.com/royalwagenborg](http://www.facebook.com/royalwagenborg)  
 [www.youtube.com/royalwagenborg](http://www.youtube.com/royalwagenborg)  
 [www.twitter.com/royalwagenborg](http://www.twitter.com/royalwagenborg)  
 [www.linkedin.com/company/wagenborg](http://www.linkedin.com/company/wagenborg)

**Oil & Gas****WAGENBORG OFFSHORE B.V.**

Marktstraat 10  
P.O. Box 14, 9930 AA Delfzijl, NL  
T +31 (0)596 636911  
F +31 (0)596 636250  
E offshore.contracts@wagenborg.com

**WAGENBORG FOXDRILL B.V.**

Kampenstraat 14  
P.O. Box 404, 7570 AK Oldenzaal, NL  
T +31 (0)541 580500  
F +31 (0)541 580505  
E foxdrill@wagenborg.com

**WAGENBORG KAZAKHSTAN B.V.**

Marktstraat 10  
P.O. Box 14, 9930 AA Delfzijl, NL  
T +31 (0)596 636911  
F +31 (0)596 636250  
E offshore@wagenborg.com

**WAGENBORG OILFIELD SERVICES**

629800, Russian Federation  
Yamalo-Nenetskiy autonomous district Noyabrsk  
Promzona, Panel 8  
T +7 3496 354842  
F +7 3496 354852  
E info.russia@wagenborg.com

**WAGENBORG MIDDLE EAST**

P.O.Box 37296, Jebel Ali Free Zone (South),  
Near Redington, Dubai, U.A.E.  
T + 971 4 8894797  
F + 971 4 8894798

**Shipping****WAGENBORG SHIPPING B.V.**

Marktstraat 10  
P.O. Box 14, 9930 AA Delfzijl, NL  
T +31(0)596 636 911  
F +31 (0)596 636 250  
E chartering@wagenborg.com

**WAGENBORG FAR EAST REP. OFFICE**

Yuandong building rm. 1703  
1101 Pudong nan road, Shanghai, China  
T +86-13817579651 (mobile)  
E shanghai.info@wagenborg.com

**WAGENBORG SHIPPING SWEDEN AB**

Fosievägen 17  
P.O. Box 8054, SE-200 41 Malmö, Sweden  
T +46 (0)40 93 71 00  
E info.sweden@wagenborg.com

**WAVE SHIPPING, S.L.**

Francisco Santos, 2 2º Izq.  
28028 Madrid  
T +34 917 253763  
F +34 917 254022  
E wave@waveship.com

**WAGENBORG SHIPPING NORTH AMERICA INC.**

500 Place d'Armes, Suite 2310  
Montreal, Quebec, H2Y 2W2, Canada  
T +1 514 2888282  
F +1 514 8422744  
E info@wagenborgna.ca

**WAGENBORG SOUTH EAST ASIA**

15th Floor, A-Place Building, Coral Way  
Central Business Park 1, Island 1A  
Macapagal Avenue, Pasay City, Philippines 1308  
Tel. +63 2 553 6866  
Fax +63 2 828 6897

**WAGENBORG SAINT PETERSBURG**

5 Gapsalskaya street, office 614 St. Petersburg, Russia  
T +7 (812) 714 98 05  
F +7 (812) 714 97 83

**Storage & warehousing****WAGENBORG STEVEDORING B.V.**

Handelskade Oost 21, 9934 AR Delfzijl, NL  
T +31 (0)596 636911  
F +31 (0)596 630417  
E stevedoring@wagenborg.com

**Projects & Logistics****WAGENBORG PROJECTS & LOGISTICS B.V.**

Marktstraat 10  
P.O. Box 14, 9930 AA Delfzijl, NL  
T +31(0)596 636 911  
F +31 (0)596 636 250  
E chartering@wagenborg.com

**WAGENBORG PROJECTS & LOGISTICS B.V.**

Ridderhaven 27, 2984 BT Ridderkerk, NL  
T +31 (0)180 411169  
F +31 (0)180 465351  
E logistic@wagenborg.com

**Heavy lift & transport****WAGENBORG NEDLIFT B.V.**

Gideonweg 5  
P.O. Box 254, 9700 AG Groningen, NL  
T +31 (0)50 368 2800  
F +31 (0)50 368 2849  
E nedlift@wagenborg.com

**WAGENBORG NEDLIFT B.V.**

Diamantstraat 20  
7554 TA Hengelo, NL  
T +31 (0)74 245 4545  
F +31 (0)74 245 4400  
E nedlift@wagenborg.com

**Towage****WAGENBORG TOWAGE B.V.**

Marktstraat 10  
P.O. Box 14, 9930 AA Delfzijl, NL  
T +31(0)596 636 911  
F +31 (0)596 636 250  
E towage@wagenborg.com