

Welcome to Royal Wagenborg

As experts in international transport by road and water, we offer custom made solutions for every transport need, expertly and with dedication. At Royal Wagenborg the word "impossible" does not exist. We believe that there is a solution for every transport requirement or logistical problem. We offer an integrated approach, including project support, equipment, experienced employees and a global network, reason why our clients have come to increasingly rely on our knowledge and expertise. At Royal Wagenborg safety and reliability are paramount. We are committed to providing you with the highest standard of quality.

12.004 DWT MULTIPURPOSE DRY CARGO CARRIER

Royal Wagenborg in cooperation with Royal Niestern Sander, Delfzijl has developed a new serie of 4 x 12000 DTW multi-purpose general cargo vessels. All this makes the vessels suitable for carrying general cargoes, such as steel, forrest products, breakbulk and bulk cargoes including grain.

These vessels are designed with two fully open hatch boxshaped holds, with a length of 48 and 55 meters.

The vessels are equipped with full tweendeck, consisting of loose tweendeck pontoons, tweendecks are moveable by means of hatch cover gantry crane.

The tweendecks can also be used as class approved separation bulkheads in various positions for efficient loading of grains and other bulk cargoes as well as separation of different types of cargo.

The vessels are built in compliance with the rules and regulations of bureau veritas and have an ice class 1a notation. The vessels are equipped and employable for world-wide trading including navigation on the Saint Lawrence Seaways, Panama Canal and Suez Canal.

With these vessels, Royal Wagenborg has set new standards as to versatility, reliability and efficiency.

Wagenborg Shipping

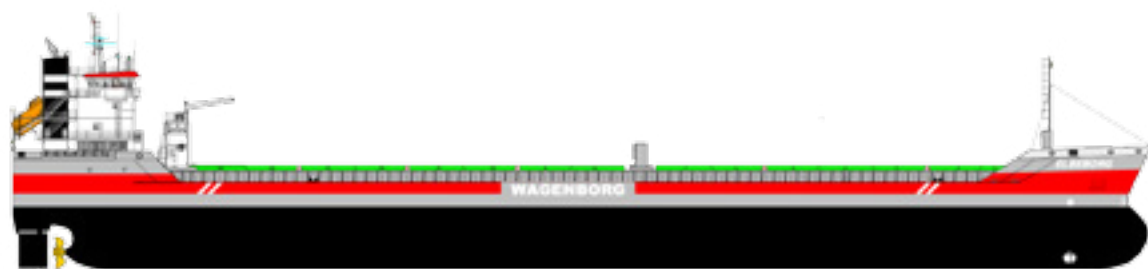
Wagenborg Shipping is a member of Royal Wagenborg. Founded in 1898, the company continuously invests in various means of transport to serve the needs of a broad variety of customers by sea, shallow water and road offering a complete chain of transport.

Wagenborg companies are, amongst others, involved in shipping, stevedoring, road transport, forwarding, warehousing, crane rental, heavy lifting, heavy transport, oil- and gas related services, towage and passenger services. Our integrated logistics solutions are flexible and reliable, provided by our dedicated crew of more than 3500 employees.

Royal Wagenborg has identified quality, health, safety and the environment as key factors. Wagenborg Shipping manages its quality according to the ISO 9001, ISO 14001, AEO and IIP-standards. Our cargo vessels are ISM and ISPS-certified.

Exl-class sister vessels

Elkeborg	2011
Eeborg	2012
Exeborg	2013



GENERAL PARTICULARS

DWAT	12.004
DWCC Summer	10.900
DWCC Winter	10.600
GT/NT	7.680/3.846
LOA	144.56m
LBPP	138.20m
BOA	15.87m
Moulded depth	11.15m
Draft Summer/Winter	8.00/7.85
Height WL-HC in ballast	9.25m
Airdraft in ballast	30.35m
Built	2011-2013
Flag	Dutch
Homeport	Delfzijl
Iceclass	Finnish/Swedish 1A
Shipyards	Niestern Sander, NL
General description:	HULL+MACH, AUT-UMS, SYS-NEQ 1, General cargo ship, container ship, Heavy cargo, unrestricted navigation, Ice class 1A, LASHING MON-SHAFT

ENGINE

Main engine (*)	Wartsila 9L32C 4.500kW
Speed/consumption (*)	12.00kn/16.00mts
Main engine (**)	4000kW MAK 8M32C
Speed (**)	15.00kn
Fuel	IFO RMG 380 ISO 8217:2005
Gear	Gearless
Bowthruster	700kW

* Elkeborg, Eeborg
** Exeborg

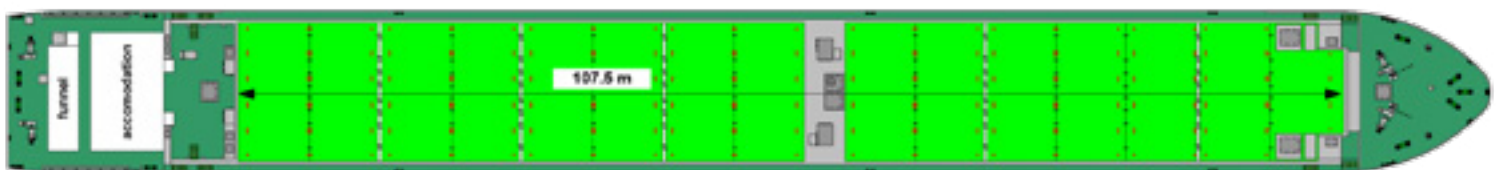
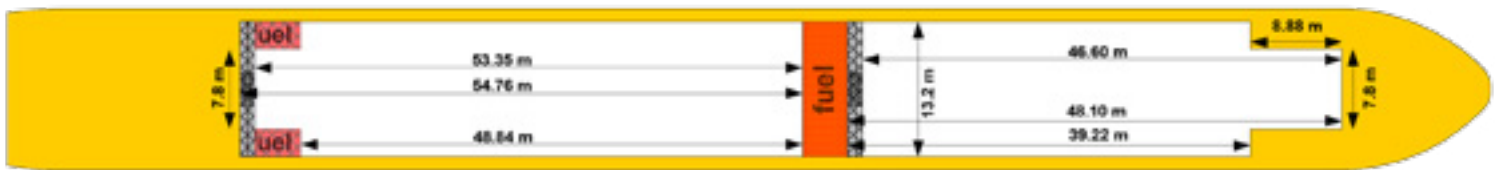
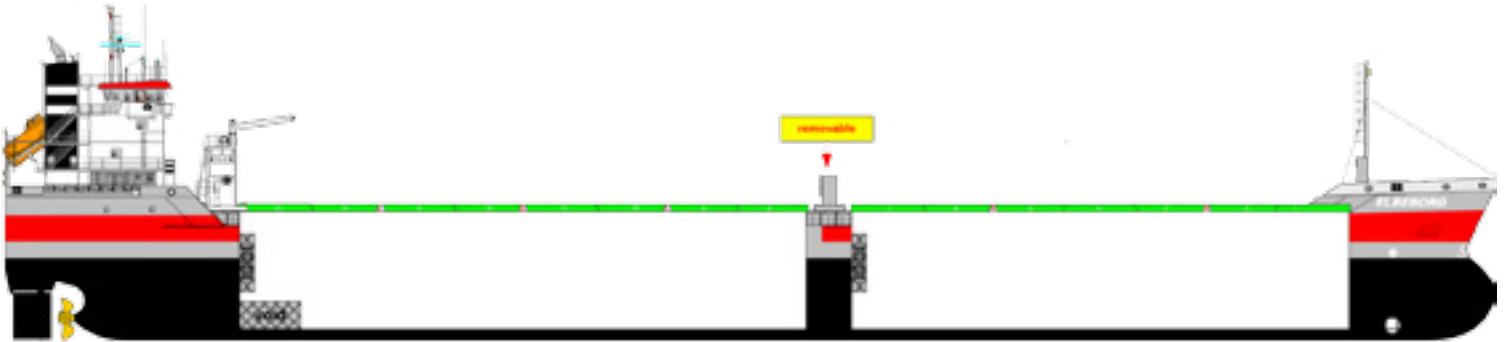
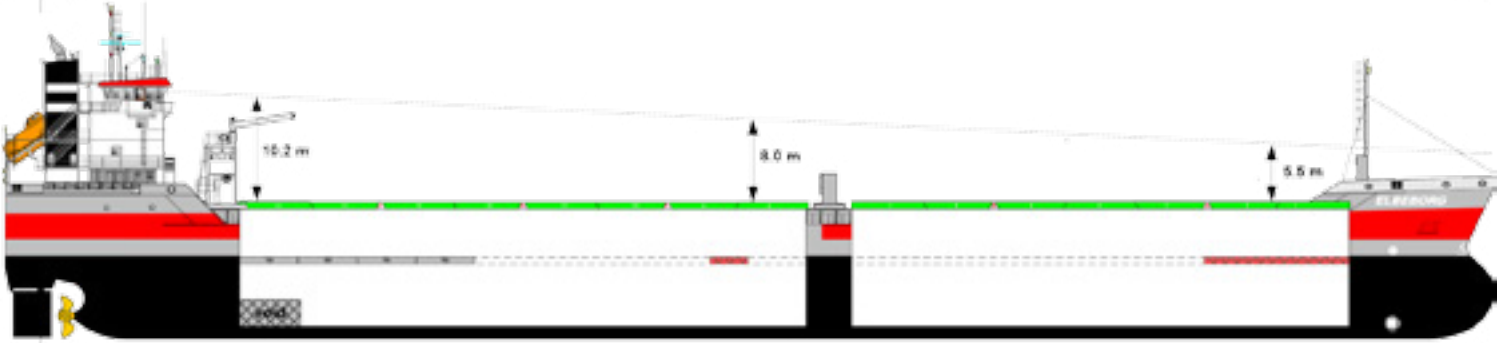
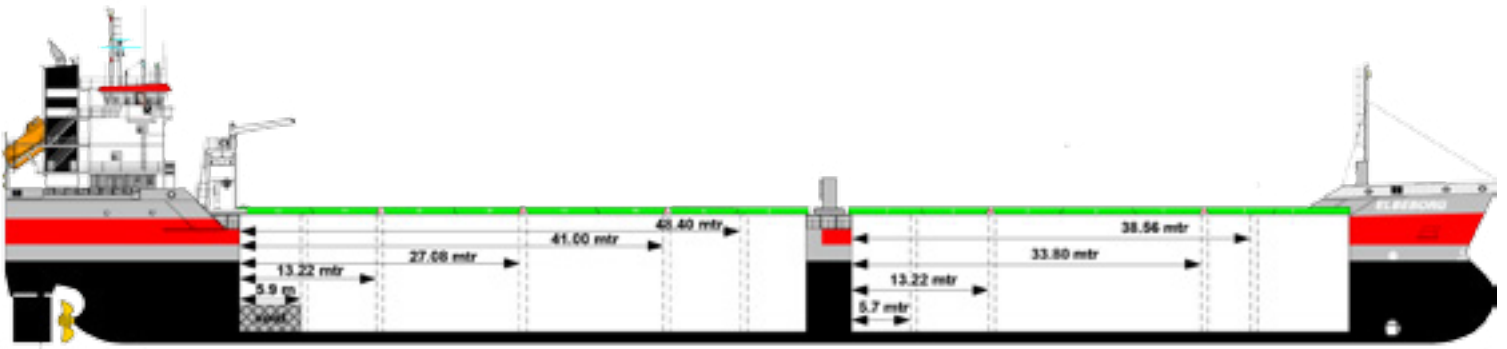
HOLDS/HATCHES

Type of holds	Box
Capacity	523.237cbft including 2 moveable bulkheads
Capacity hold 1	235.558cbft incl. 1 moveable bulkhead
Capacity hold 2	287.679cbft incl. 1 moveable bulkhead
Tweendecks	no
Tanktop strength	15.00mt/m ²
Weather deck strength	1.75mt/m ²
Strongbeam	No
Dimensions hold 1	48.10x13.20x11.42
Dimensions hatch 1	48.10x13.20
Dimensions hold 2	54.76x13.20x11.42
Dimensions hatch 2	54.76x13.20
Hatchcover type	Coops and Nieborg Pontoon Hatch cover system
Electrical ventilation	Holdventilation 12 air changes per hour. Both holds are fitted with dehumidifier system
Various	IMO, Co2, Suez, Panama, Great Lakes, and AWWF fitted
Insurance	Bureau Veritas
Classification	North of England P&I Association
P and I club	Loyal Insurance Broker BV
H&M Insurer	Euro 22.000.000,-
Insurance value	







ROYAL WAGENBORG

P.O. Box 14, 9930 AA Delfzijl
Marktstraat 10, 9934 CK Delfzijl
The Netherlands
T +31(0)596 636 911
F +31(0)596 636 250
E info@wagenborg.com



Head office**ROYAL WAGENBORG**

Marktstraat 10
P.O. Box 14, 9930 AA Delfzijl, NL
T +31(0) 596 636 911
F +31(0) 596 636 250
E info@wagenborg.com

 www.facebook.com/royalwagenborg
 www.youtube.com/royalwagenborg
 www.twitter.com/royalwagenborg
 www.linkedin.com/company/wagenborg

Oil & Gas**WAGENBORG OFFSHORE B.V.**

Marktstraat 10
P.O. Box 14, 9930 AA Delfzijl, NL
T +31 (0)596 636911
F +31 (0)596 636250
E offshore.contracts@wagenborg.com

WAGENBORG FOXDRILL B.V.

Kampenstraat 14
P.O. Box 404, 7570 AK Oldenzaal, NL
T +31 (0)541 580500
F +31 (0)541 580505
E foxdrill@wagenborg.com

WAGENBORG KAZAKHSTAN B.V.

Marktstraat 10
P.O. Box 14, 9930 AA Delfzijl, NL
T +31 (0)596 636911
F +31 (0)596 636250
E offshore@wagenborg.com

WAGENBORG OILFIELD SERVICES

629800, Russian Federation
Yamalo-Nenetskiy autonomous district Noyabrsk
Promzona, Panel 8
T +7 3496 354842
F +7 3496 354852
E info.russia@wagenborg.com

WAGENBORG MIDDLE EAST

P.O.Box 37296, Jebel Ali Free Zone (South),
Near Redington, Dubai, U.A.E.
T + 971 4 8894797
F + 971 4 8894798

Shipping**WAGENBORG SHIPPING B.V.**

Marktstraat 10
P.O. Box 14, 9930 AA Delfzijl, NL
T +31(0)596 636 911
F +31 (0)596 636 250
E chartering@wagenborg.com

WAGENBORG FAR EAST REP. OFFICE

Yuandong building rm. 1703
1101 Pudong nan road, Shanghai, China
T +86-13817579651 (mobile)
E shanghai.info@wagenborg.com

WAGENBORG SHIPPING SWEDEN AB

Fosievägen 17
P.O. Box 8054, SE-200 41 Malmö, Sweden
T +46 (0)40 93 71 00
E info.sweden@wagenborg.com

WAVE SHIPPING, S.L.

Francisco Santos, 2 2º Izq.
28028 Madrid
T +34 917 253763
F +34 917 254022
E wave@waveship.com

WAGENBORG SHIPPING NORTH AMERICA INC.

500 Place d'Armes, Suite 2310
Montreal, Quebec, H2Y 2W2, Canada
T +1 514 2888282
F +1 514 8422744
E info@wagenborgna.ca

WAGENBORG SOUTH EAST ASIA

15th Floor, A-Place Building, Coral Way
Central Business Park 1, Island 1A
Macapagal Avenue, Pasay City, Philippines 1308
Tel. +63 2 553 6866
Fax +63 2 828 6897

WAGENBORG SAINT PETERSBURG

5 Gapsalskaya street, office 614 St. Petersburg, Russia
T +7 (812) 714 98 05
F +7 (812) 714 97 83

Storage & warehousing**WAGENBORG STEVEDORING B.V.**

Handelskade Oost 21, 9934 AR Delfzijl, NL
T +31 (0)596 636911
F +31 (0)596 630417
E stevedoring@wagenborg.com

Projects & Logistics**WAGENBORG PROJECTS & LOGISTICS B.V.**

Marktstraat 10
P.O. Box 14, 9930 AA Delfzijl, NL
T +31(0)596 636 911
F +31 (0)596 636 250
E chartering@wagenborg.com

WAGENBORG PROJECTS & LOGISTICS B.V.

Ridderhaven 27, 2984 BT Ridderkerk, NL
T +31 (0)180 411169
F +31 (0)180 465351
E logistic@wagenborg.com

Heavy lift & transport**WAGENBORG NEDLIFT B.V.**

Gideonweg 5
P.O. Box 254, 9700 AG Groningen, NL
T +31 (0)50 368 2800
F +31 (0)50 368 2849
E nedlift@wagenborg.com

WAGENBORG NEDLIFT B.V.

Diamantstraat 20
7554 TA Hengelo, NL
T +31 (0)74 245 4545
F +31 (0)74 245 4400
E nedlift@wagenborg.com

Towage**WAGENBORG TOWAGE B.V.**

Marktstraat 10
P.O. Box 14, 9930 AA Delfzijl, NL
T +31(0)596 636 911
F +31 (0)596 636 250
E towage@wagenborg.com