



sign of solutions

## Welcome to Royal Wagenborg

As experts in international transport by road and water, we offer custom made solutions for every transport need, expertly and with dedication. At Royal Wagenborg the word "impossible" does not exist. We believe that there is a solution for every transport requirement or logistical problem. We offer an integrated approach, including project support, equipment, experienced employees and a global network, reason why our clients have come to increasingly rely on our knowledge and expertise. At Royal Wagenborg safety and reliability are paramount. We are committed to providing you with the highest standard of quality.

## INTRODUCING ROYAL WAGENBORG'S PIONEERING WALK TO WORK VESSEL

For more than a century Royal Wagenborg has been offering innovative and reliable transport solutions and the new Walk to Work vessel is no exception.

The Wagenborg Walk to Work vessel will play a crucial role in the maintenance and servicing of production platforms in the North Sea, ensuring safe, efficient, productive and cost-effective operations at offshore locations.

Through the efficient employment of both personnel and equipment, this new Walk to Work vessel delivers substantial cost reductions, enabling service and maintenance staff to work on several different platforms on one route, making it highly economical and cost efficient.

To move loads from the vessel onto the offshore workplace, the ship is equipped with a heave-compensated crane with a Safe Working Load of 5 tonnes at a height of 30 m and 20 m outreach. In the case of an emergency, personnel can also be transported via the crane.

Further advantages of this multifunctional vessel:

- Safe access to/from the offshore workplace in wave heights up to 2.5 m
- Safety is ensured by using the Ampelmann system - a motion compensated gangway. This innovative technology literally means this is a true "Walk to Work" vessel, allowing personnel to safely cross from ship to platform all year round.
- Accommodation for 60 people (20 crew and 40 maintenance staff)
- Possibility to restart sleeping wells by using a tailor-made, integrated installation below deck
- Spacious and unobstructed 500 m<sup>2</sup> deck
- Workshop and ample storage space

Being built at the reputed Dutch shipyard, Royal Niestern Sander, the Walk to Work vessel is set for delivery early 2015.

## Wagenborg Offshore

As an international offshore specialist and with many years of experience in the global oil and gas transport business, Wagenborg Offshore has committed professionals at its heart, carrying out complex logistic projects worldwide.

Wagenborg Offshore is a specialist in shallow water transport and has been operating in the Caspian Sea for decades with its dedicated vessels. The company also has vast experience and knowledge of ice navigation in Baltic and Scandinavian waters.

Wagenborg Offshore has state-of-the-art equipment and technologies that comply with the highest quality industry standards.

## GENERAL SPECIFICATIONS

### GENERAL

Type of vessel:	Maintenance Support vessel Special purpose ship
Yard:	Royal Niestern Sander, NL
Built:	2013 - 2014
Flag:	Dutch
Homeport:	TBD
Class:	Bureau Veritas
Notation:	I, +HULL, +MACH, +AUT-UMS, UNRESTRICTED NAVIGATION, SUPPLY VESSEL LHNS, DYNAPOS AM/AT-R, +ALM or equivalent, CLEANSHIP, IN WATER SURVEY, COMF-NOISE 2, COMF-VIB 3

### DIMENSIONS

DWAT	TBD
GT/NET	Approx. 3,750t / TBD
LOA:	79.43m
LBPP:	76.08m
BOA:	15.85m
Moulded depth:	7.00m
Draught max:	5.40m TBC
Airdraft in ballast:	31.30m TBC

### THRUSTER AND PROPULSION PLANT

Main Diesel Generators:	4x CAT 3512
Rating:	1700 kW each
Stern thrusters:	2x Voith SCHneider Propeller
Rating:	1850 kW each
Stern thruster drive:	Active front end
Bowthruster	2x Rim Drive
Rating:	1000 kW each
Bow thruster drive:	12 pulse frequency drive

### FUEL

Fuel	Marine Gas Oil (DMA)
------	----------------------

### DYNAMIC POSITION

Kongsberg DP-21	
Position reference systems:	1x Cyscan 1x Radius 2x DGPS

### ACCOMMODATION

60 persons in single and double cabins	
4 offices	
1 hospital	

### OTHER FACILITIES

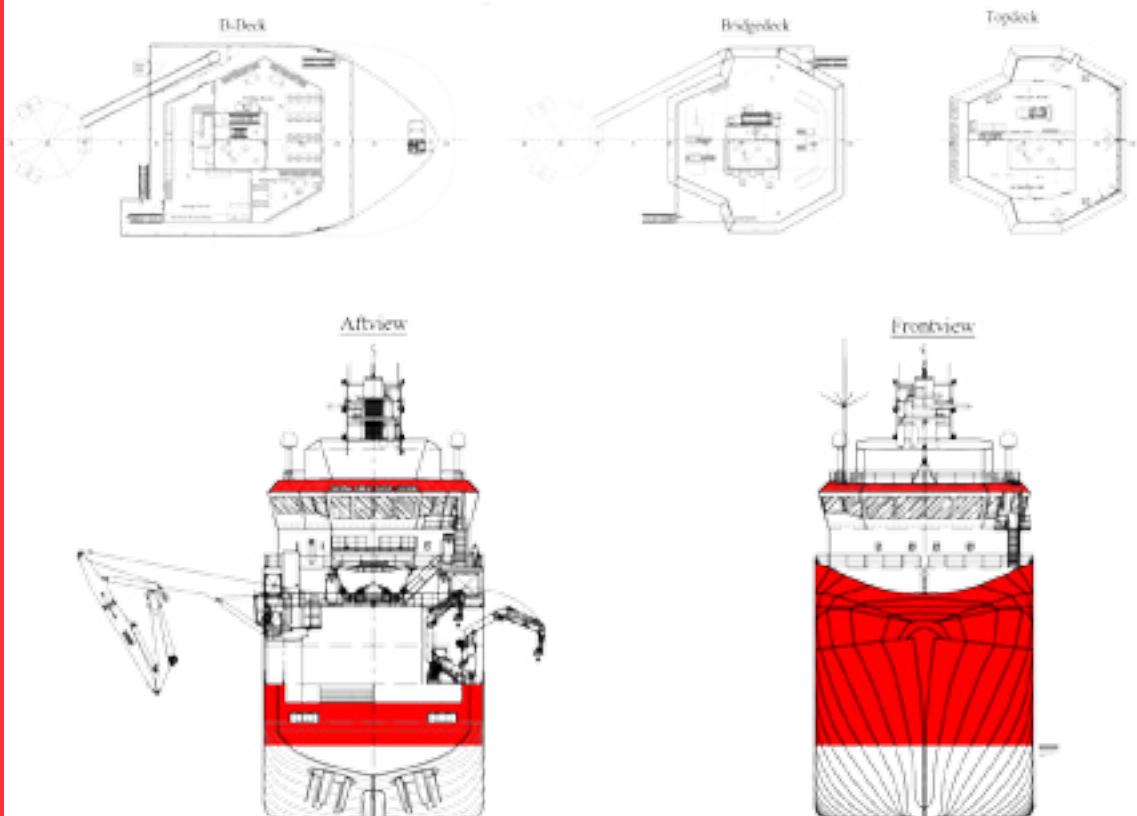
Main deck area	500m <sup>2</sup>
Deck strength	5t/m <sup>2</sup>
1x integrated Ampelmann motion compensated gangway	
1x motion compensated offshore deck crane	
Lifting capacity:	20t at 10m / 2t at 32.5m 15t at 9m/ 1.5t at 32.5m
Covered working area and additional workshops and warehouse on main deck	

### SPECIAL PRODUCT TANKS

Products:	MEG, C.I., K.H.I., foam MEG
Capacities:	10x 21m <sup>3</sup> 1x 110m <sup>3</sup> 1x 50m <sup>3</sup>

### CARGO PUMPS

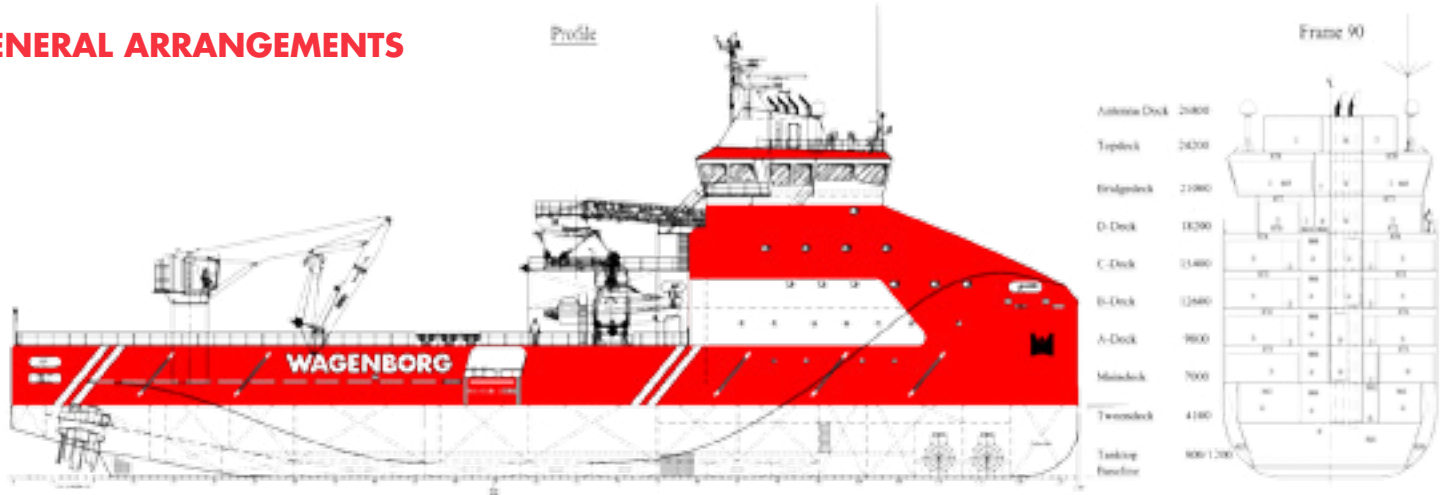
12x cargo booster / transfer pumps 30 m <sup>3</sup> /hr - 6 bar each
2x High pressure injection pumps 5m <sup>3</sup> /hr - 425 bar
1x Potable water discharge pump 75 m <sup>3</sup> /hr
1x Fuel Oil discharge pump 75 m <sup>3</sup> /hr
5x Special product reeled bunker hoses with TODO couplings



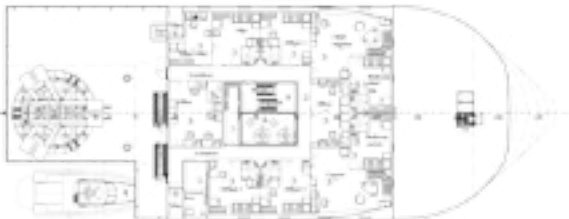
## WAGENBORG OFFSHORE

P.O. Box 14, 9930 AA Delfzijl  
Marktstraat 10, 9934 CK Delfzijl  
The Netherlands  
T +31 (0)596 636 911  
F +31 (0)596 636 250  
E [businessdevelopment@wagenborg.com](mailto:businessdevelopment@wagenborg.com)

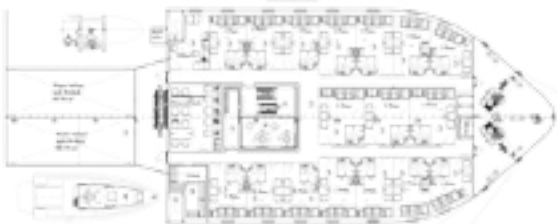
## GENERAL ARRANGEMENTS



C-Deck



B-Deck



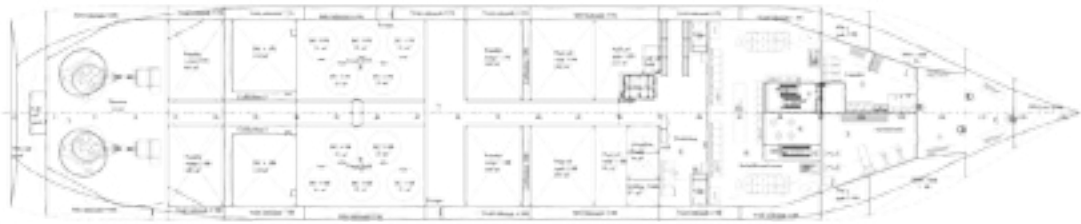
A-Deck



Maindeck



Tweendeck







Tanktop



**Head office****ROYAL WAGENBORG**

Marktstraat 10  
P.O. Box 14, 9930 AA Delfzijl, NL  
T +31(0) 596 636 911  
F +31(0) 596 636 250  
E info@wagenborg.com

 [www.facebook.com/royalwagenborg](http://www.facebook.com/royalwagenborg)  
 [www.youtube.com/royalwagenborg](http://www.youtube.com/royalwagenborg)  
 [www.twitter.com/royalwagenborg](http://www.twitter.com/royalwagenborg)  
 [www.linkedin.com/company/wagenborg](http://www.linkedin.com/company/wagenborg)

**Oil & Gas****WAGENBORG OFFSHORE B.V.**

Marktstraat 10  
P.O. Box 14, 9930 AA Delfzijl, NL  
T +31 (0)596 636911  
F +31 (0)596 636250  
E offshore.contracts@wagenborg.com

**WAGENBORG FOXDRILL B.V.**

Kampenstraat 14  
P.O. Box 404, 7570 AK Oldenzaal, NL  
T +31 (0)541 580500  
F +31 (0)541 580505  
E foxdrill@wagenborg.com

**WAGENBORG KAZAKHSTAN B.V.**

Marktstraat 10  
P.O. Box 14, 9930 AA Delfzijl, NL  
T +31 (0)596 636911  
F +31 (0)596 636250  
E offshore@wagenborg.com

**WAGENBORG OILFIELD SERVICES**

629800, Russian Federation  
Yamalo-Nenetskiy autonomous district Noyabrsk  
Promzona, Panel 8  
T +7 3496 354842  
F +7 3496 354852  
E info.russia@wagenborg.com

**WAGENBORG MIDDLE EAST**

P.O.Box 37296, Jebel Ali Free Zone (South),  
Near Redington, Dubai, U.A.E.  
T + 971 4 8894797  
F + 971 4 8894798

**Shipping****WAGENBORG SHIPPING B.V.**

Marktstraat 10  
P.O. Box 14, 9930 AA Delfzijl, NL  
T +31(0)596 636 911  
F +31 (0)596 636 250  
E chartering@wagenborg.com

**WAGENBORG FAR EAST REP. OFFICE**

Yuandong building rm. 1703  
1101 Pudong nan road, Shanghai, China  
T +86-13817579651 (mobile)  
E shanghai.info@wagenborg.com

**WAGENBORG SHIPPING SWEDEN AB**

Fosievägen 17  
P.O. Box 8054, SE-200 41 Malmö, Sweden  
T +46 (0)40 93 71 00  
E info.sweden@wagenborg.com

**WAVE SHIPPING, S.L.**

Francisco Santos, 2 2º Izq.  
28028 Madrid  
T +34 917 253763  
F +34 917 254022  
E wave@waveship.com

**WAGENBORG SHIPPING NORTH AMERICA INC.**

500 Place d'Armes, Suite 2310  
Montreal, Quebec, H2Y 2W2, Canada  
T +1 514 2888282  
F +1 514 8422744  
E info@wagenborgna.ca

**WAGENBORG SOUTH EAST ASIA**

15th Floor, A-Place Building, Coral Way  
Central Business Park 1, Island 1A  
Macapagal Avenue, Pasay City, Philippines 1308  
Tel. +63 2 553 6866  
Fax +63 2 828 6897

**WAGENBORG SAINT PETERSBURG**

5 Gapsalskaya street, office 614 St. Petersburg, Russia  
T +7 (812) 714 98 05  
F +7 (812) 714 97 83

**Storage & warehousing****WAGENBORG STEVEDORING B.V.**

Handelskade Oost 21, 9934 AR Delfzijl, NL  
T +31 (0)596 636911  
F +31 (0)596 630417  
E stevedoring@wagenborg.com

**Projects & Logistics****WAGENBORG PROJECTS & LOGISTICS B.V.**

Marktstraat 10  
P.O. Box 14, 9930 AA Delfzijl, NL  
T +31(0)596 636 911  
F +31 (0)596 636 250  
E chartering@wagenborg.com

**WAGENBORG PROJECTS & LOGISTICS B.V.**

Ridderhaven 27, 2984 BT Ridderkerk, NL  
T +31 (0)180 411169  
F +31 (0)180 465351  
E logistic@wagenborg.com

**Heavy lift & transport****WAGENBORG NEDLIFT B.V.**

Gideonweg 5  
P.O. Box 254, 9700 AG Groningen, NL  
T +31 (0)50 368 2800  
F +31 (0)50 368 2849  
E nedlift@wagenborg.com

**WAGENBORG NEDLIFT B.V.**

Diamantstraat 20  
7554 TA Hengelo, NL  
T +31 (0)74 245 4545  
F +31 (0)74 245 4400  
E nedlift@wagenborg.com

**Towage****WAGENBORG TOWAGE B.V.**

Marktstraat 10  
P.O. Box 14, 9930 AA Delfzijl, NL  
T +31(0)596 636 911  
F +31 (0)596 636 250  
E towage@wagenborg.com