

Welcome to Royal Wagenborg

As experts in international transport by road and water, we offer custom made solutions for every transport need, expertly and with dedication. At Royal Wagenborg the word "impossible" does not exist. We believe that there is a solution for every transport requirement or logistical problem. We offer an integrated approach, including project support, equipment, experienced employees and a global network, reason why our clients have come to increasingly rely on our knowledge and expertise. At Royal Wagenborg safety and reliability are paramount. We are committed to providing you with the highest standard of quality.

21.350 DWT MULTIPURPOSE DRY CARGO CARRIER

Royal Wagenborg, in cooperation with Hudong-Zhonghua Shipyards, Shanghai, has developed a lengthened version of the successful A-class. This resulted in a new serie of 4x 21000tDW Multi-Purpose Container Vessels: the t-class.

These vessels are designed with two fully box, high volume, holds of 57 and 55m length and completely open hatch. The four 60 ton cranes are positioned for optimal cargo handling, including tandem operation up to 120 ton, in both holds.

A removable pontoon tweendeck, which can be fitted at three different heights, is provided. The tweendeck panels can also be used as Class Approved separation bulkheads in various positions for efficient loading of grains and other bulk cargos as well as separation of different types of cargo.

Many combinations of separation bulkheads and (partial) tweendeck are possible. For optimal hold volume, all panels can be stored outside the holds.

Solidly constructed to Ice Class 1A, these vessels are fully fitted to trade worldwide, including the Saint Lawrence Seaway, Panama Canal and Suez Canal. Dedicated fuel day tanks and bunkers make an efficient switch over between different grades of fuel oil possible.

Anticipating future legislation and in line with Wagenborg environmental policy, these vessels are fitted with a type approved Ballast Water Treatment Unit as well as environmentally friendly propeller shaft lubrication.

For clean cargo operations, and improved vessel independence and efficiency, two different hold cleaning installations are provided: tank wash guns, fitted in the hatch covers, and a fixed heavy duty high pressure installation. Wash water can be collected in the dedicated slob tank. Comprehensive hold bilge and firefighting systems are provided enabling a wide range of dangerous cargo, both packed and in bulk.

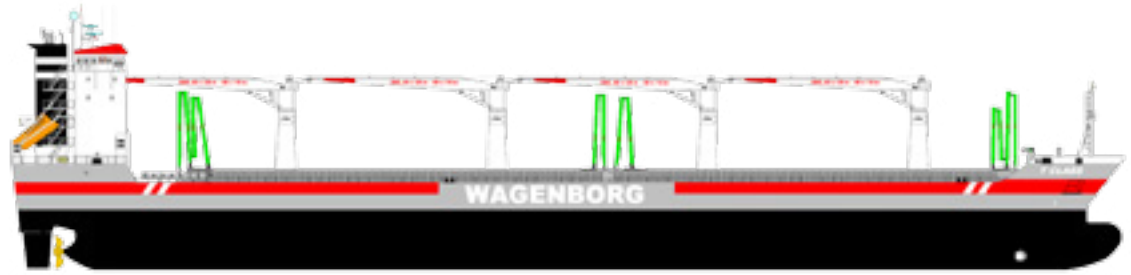
With these vessels, Royal Wagenborg has set new standards as to versatility, reliability and efficiency.

Wagenborg Shipping

Wagenborg Shipping is a member of Royal Wagenborg. Founded in 1898, the company continuously invests in various means of transport to serve the needs of a broad variety of customers by sea, shallow water and road offering a complete chain of transport.

Wagenborg companies are, amongst others, involved in shipping, stevedoring, road transport, forwarding, warehousing, crane rental, heavy lifting, heavy transport, oil- and gas related services, towage and passenger services. Our integrated logistics solutions are flexible and reliable, provided by our dedicated crew of more than 3500 employees.

Royal Wagenborg has identified quality, health, safety and the environment as key factors. Wagenborg Shipping manages its quality according to the ISO 9001, ISO 14001, AEO and IIP-standards. Our cargo vessels are ISM and ISPS-certified.



GENERAL PARTICULARS

DWAT	21.350
DWCC Summer	19.500
DWCC Winter	19.300
GT/NT	14.508/7.626
LOA	172.28m
LBPP	162.65m
BOA	21.49m
Moulded depth	13.31m
Draft Summer/Winter	9.382/9.178m
Height WL-HC in ballast	11.50m
Airdraft in ballast	35.85m
Built	2013
Flag	Dutch
Homeport	Delfzijl
Iceclass	Finnish/Swedish 1A
Shipyard	Hudong-Zhonghua, China
General description:	100A1, Strengthened for Heavy Cargoes, Any Holds May be Empty, Container Cargoes in all Holds and on Upper Deck and on all Hatch Covers, ShipRights ACS (B), IWS, LI, LMC, UMS, NAV1

ENGINE

Main engine	Wärtsilä 6L46F 7500 kW
Speed/consumption	14 kn/20.00mts basis
Fuel	7.60m draft IFO RMG 380 ISO 8217:2005
Gear	4 cranes each with capacity of 60 mts
Bowthruster	750kW

HOLDS/HATCHES

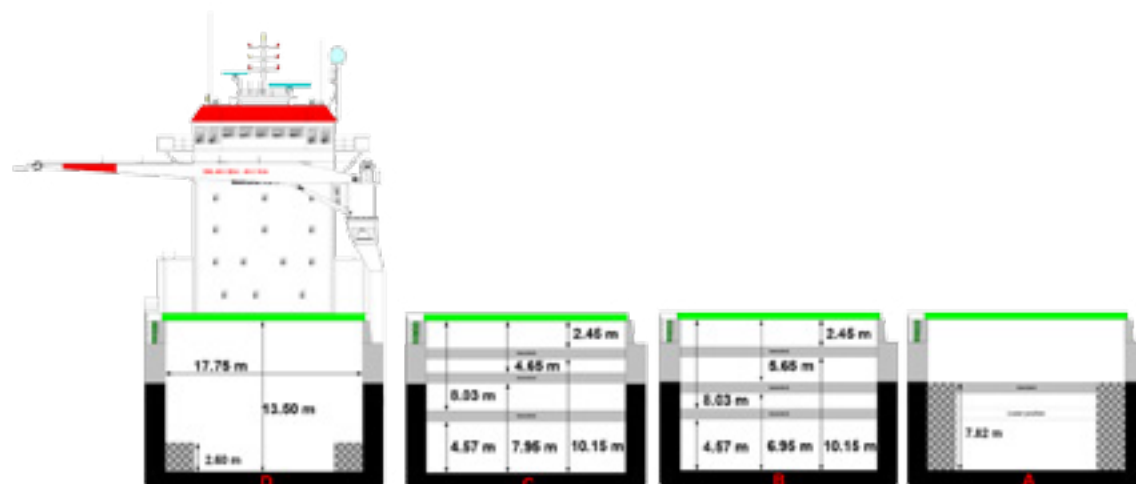
Type of holds	Box
Capacity	928.414cbft
Capacity hold 1	434.950cbft
Capacity hold 2	493.464cbft
Tweendecks	18 tweendeck pontoons
Tanktop strength	20.00mt/m2
Tweendeck strenght	4.00mt/m2
Weather deck strength	1.75mt/m2
Strongbeam	No
Dimensions hold 1	55.42x17.75x13.50m
Dimensions hatch 1	55.42x17.75
Dimensions hold 2	58.68x17.75x13.50m
Dimensions hatch 2	58.68x17.75
Hatchcover type	MacGregor Navire Hydraulic steel pontoon hatches
Electrical ventilation	Air changes per hour basis empty holds: 12 x in hold 1, 8 x in hold 2. Both holds are fitted with dehumidifier system consisting of 4 dehumidifier units
Various	IMO, Co2, Suez, Panama, Great Lakes, and AWWF fitted

INSURANCE

Classification	Lloyd's Register
P and I club	North of England P&I Association
H&M Insurer	Loyal Insurance Broker BV
Insurance value	Euro 30.000.000,-





T-class sister vessels

Thamesborg	2013
Taagborg	2013
Tiberborg	2013
Trinityborg	2013



Head office**ROYAL WAGENBORG**

Marktstraat 10
P.O. Box 14, 9930 AA Delfzijl, NL
T +31(0) 596 636 911
F +31(0) 596 636 250
E info@wagenborg.com

 www.facebook.com/royalwagenborg
 www.youtube.com/royalwagenborg
 www.twitter.com/royalwagenborg
 www.linkedin.com/company/wagenborg

Oil & Gas**WAGENBORG OFFSHORE B.V.**

Marktstraat 10
P.O. Box 14, 9930 AA Delfzijl, NL
T +31 (0)596 636911
F +31 (0)596 636250
E offshore.contracts@wagenborg.com

WAGENBORG FOXDRILL B.V.

Kampenstraat 14
P.O. Box 404, 7570 AK Oldenzaal, NL
T +31 (0)541 580500
F +31 (0)541 580505
E foxdrill@wagenborg.com

WAGENBORG KAZAKHSTAN B.V.

Marktstraat 10
P.O. Box 14, 9930 AA Delfzijl, NL
T +31 (0)596 636911
F +31 (0)596 636250
E offshore@wagenborg.com

WAGENBORG OILFIELD SERVICES

629800, Russian Federation
Yamalo-Nenetskiy autonomous district Noyabrsk
Promzona, Panel 8
T +7 3496 354842
F +7 3496 354852
E info.russia@wagenborg.com

WAGENBORG MIDDLE EAST

P.O.Box 37296, Jebel Ali Free Zone (South),
Near Redington, Dubai, U.A.E.
T + 971 4 8894797
F + 971 4 8894798

Shipping**WAGENBORG SHIPPING B.V.**

Marktstraat 10
P.O. Box 14, 9930 AA Delfzijl, NL
T +31(0)596 636 911
F +31 (0)596 636 250
E chartering@wagenborg.com

WAGENBORG FAR EAST REP. OFFICE

Yuandong building rm. 1703
1101 Pudong nan road, Shanghai, China
T +86-13817579651 (mobile)
E shanghai.info@wagenborg.com

WAGENBORG SHIPPING SWEDEN AB

Fosievägen 17
P.O. Box 8054, SE-200 41 Malmö, Sweden
T +46 (0)40 93 71 00
E info.sweden@wagenborg.com

WAVE SHIPPING, S.L.

Francisco Santos, 2 2º Izq.
28028 Madrid
T +34 917 253763
F +34 917 254022
E wave@waveship.com

WAGENBORG SHIPPING NORTH AMERICA INC.

500 Place d'Armes, Suite 2310
Montreal, Quebec, H2Y 2W2, Canada
T +1 514 2888282
F +1 514 8422744
E info@wagenborgna.ca

WAGENBORG SOUTH EAST ASIA

15th Floor, A-Place Building, Coral Way
Central Business Park 1, Island 1A
Macapagal Avenue, Pasay City, Philippines 1308
Tel. +63 2 553 6866
Fax +63 2 828 6897

WAGENBORG SAINT PETERSBURG

5 Gapsalskaya street, office 614 St. Petersburg, Russia
T +7 (812) 714 98 05
F +7 (812) 714 97 83

Storage & warehousing**WAGENBORG STEVEDORING B.V.**

Handelskade Oost 21, 9934 AR Delfzijl, NL
T +31 (0)596 636911
F +31 (0)596 630417
E stevedoring@wagenborg.com

Projects & Logistics**WAGENBORG PROJECTS & LOGISTICS B.V.**

Marktstraat 10
P.O. Box 14, 9930 AA Delfzijl, NL
T +31(0)596 636 911
F +31 (0)596 636 250
E chartering@wagenborg.com

WAGENBORG PROJECTS & LOGISTICS B.V.

Ridderhaven 27, 2984 BT Ridderkerk, NL
T +31 (0)180 411169
F +31 (0)180 465351
E logistic@wagenborg.com

Heavy lift & transport**WAGENBORG NEDLIFT B.V.**

Gideonweg 5
P.O. Box 254, 9700 AG Groningen, NL
T +31 (0)50 368 2800
F +31 (0)50 368 2849
E nedlift@wagenborg.com

WAGENBORG NEDLIFT B.V.

Diamantstraat 20
7554 TA Hengelo, NL
T +31 (0)74 245 4545
F +31 (0)74 245 4400
E nedlift@wagenborg.com

Towage**WAGENBORG TOWAGE B.V.**

Marktstraat 10
P.O. Box 14, 9930 AA Delfzijl, NL
T +31(0)596 636 911
F +31 (0)596 636 250
E towage@wagenborg.com